



# Alcohol consumption and burden of alcohol-related diseases in Lithuania

2nd World Conference on Family Health  
25 October 2021, Monday

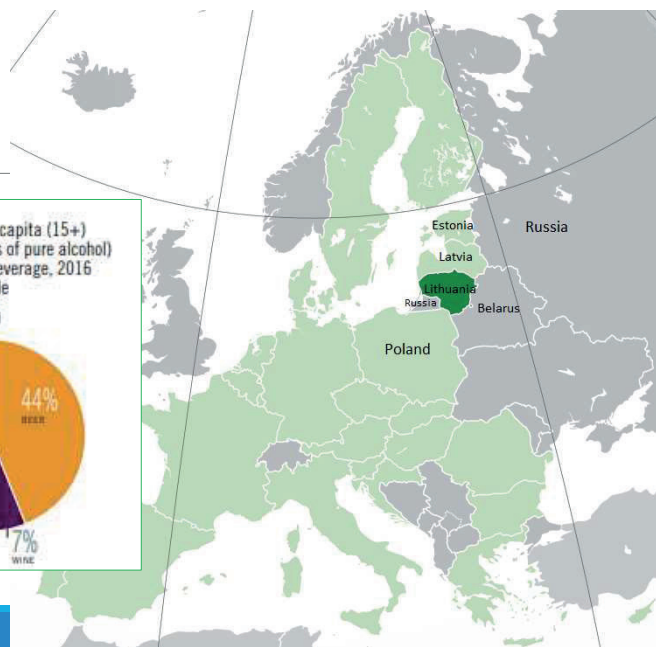
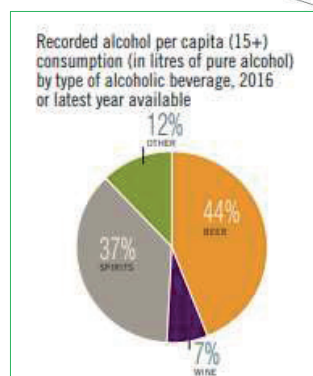
**MINDAUGAS ŠTELEMĖKAS**

HEALTH RESEARCH INSTITUTE OF THE FACULTY OF PUBLIC HEALTH, LITHUANIAN UNIVERSITY OF HEALTH SCIENCES

WHO COLLABORATING CENTRE FOR THE PREVENTION & CONTROL OF NCDs



<b>Official languages</b>	Lithuanian <sup>[1]</sup>
<b>Ethnic groups</b> (census 2019 <sup>[2]</sup> )	86.4% Lithuanians 5.7% Poles 4.5% Russians 1.5% Belarusians 1.0% Ukrainians 0.9% Other
<b>Religion</b> (2016 <sup>[3]</sup> )	93% Christianity —75% Catholicism —18% Other Christian 6% No religion 1% Other
<b>Area</b>	
• Total	65,300 km <sup>2</sup> (25,200 sq mi) (121st)
• Water (%)	1.98 (as of 2015) <sup>[8]</sup>
<b>Population</b>	
• 2021 estimate	▼ 2,784,279 <sup>[9]</sup> (142nd)
• Density	43/km <sup>2</sup> (111.4/sq mi) (138th)
<b>GDP (PPP)</b>	2021 estimate
• Total	\$107 billion <sup>[10]</sup> (83rd)
• Per capita	\$41,288 <sup>[10]</sup> (34th)

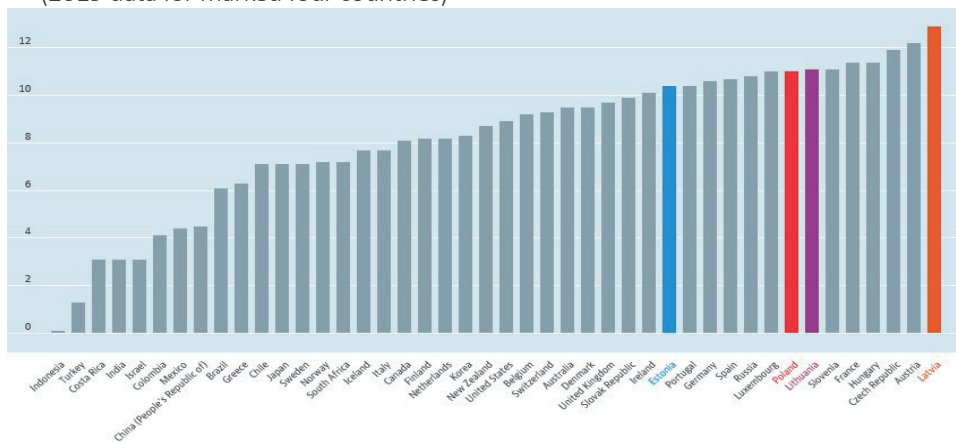


Source: wikipedia and WHO factsheet <https://data.who.int/dashboards/drinks>



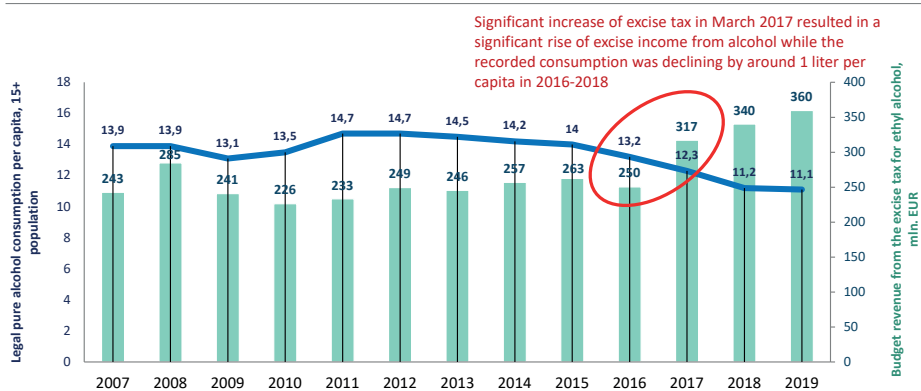
Health Research Institute

Alcohol consumption, litres per capita (aged 15 and over), 2020 or latest available (2019 data for marked four countries)



Source: OECD data <https://data.oecd.org/health/total-alcohol-consumption.htm>

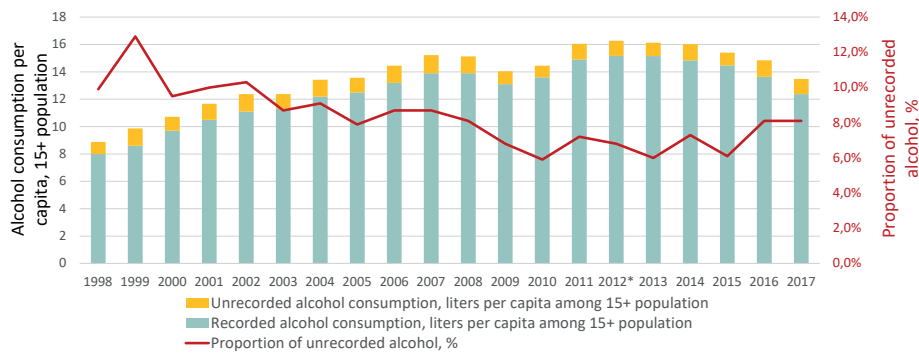
Recorded alcohol consumption per capita and income from the alcohol excise tax in Lithuania, mln. Euros



Source: Statistics Lithuania

Source: Statistics Lithuania. Official statistics portal. Available from: [https://ose.stat.gov.lt/statistiku\\_mokyma\\_analize/](https://ose.stat.gov.lt/statistiku_mokyma_analize/)

## Estimates of unrecorded alcohol consumption in Lithuania, 1998-2017



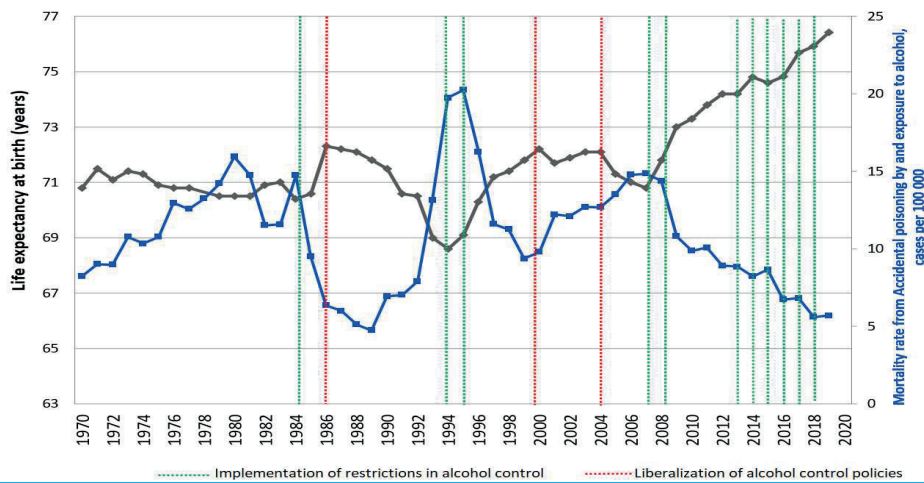
\*Year 2012 is a reference year when the unrecorded alcohol consumption estimates were available from a national survey data. Based on the reference year, the projected proportions were established based on ARIMAX modelling based on selected alcohol-attributable mortality indicators.

Source: Health Research Institute (2018). Estimates of unrecorded alcohol in Lithuania in 2016-2017. A report for the Department of Drug Tobacco and Alcohol Control. Available from <https://www.hri.lt/wp-content/uploads/2018/05/Estimates-of-unrecorded-alcohol-in-Lithuania-in-2016-2017.pdf>



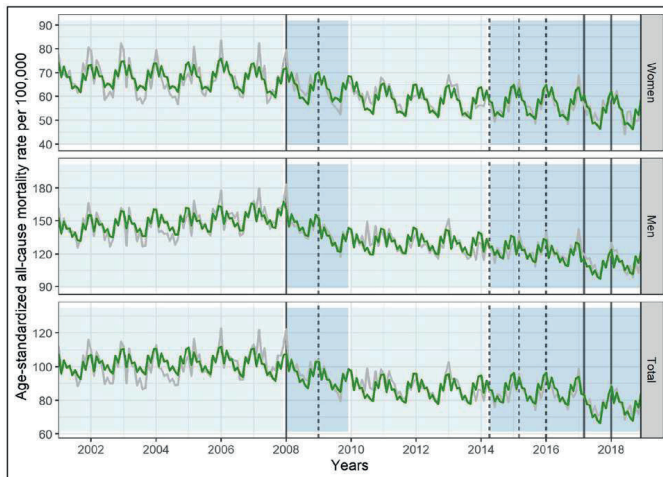
Health Research Institute

Association of alcohol control policy measures, life expectancy at birth and deaths from alcohol poisonings in Lithuania (1985–2019)

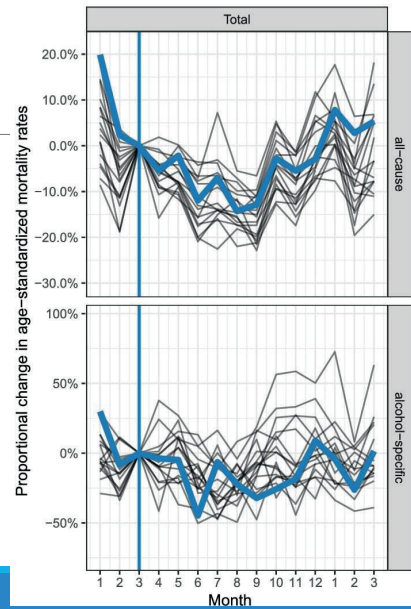


Source: Data from WHO, Lithuanian Institute of Hygiene and analysis by the researchers from Health Research Institute

Alcohol control policies, excise tax and reduced all-cause mortality in Lithuania



Source: Štelemėkas et al (2021). Alcohol control policy measures and all-cause mortality in Lithuania: an interrupted time-series analysis. *Addiction*. <https://doi.org/10.1111/add.15070>



## A project to assess the effects of alcohol control policies in Estonia, Latvia, Lithuania, Poland

This presentation is conducted as part of the project ‘**Evaluation of the impact of alcohol control policies on morbidity and mortality in Lithuania and other Baltic states**’.

Coordinated by Centre for Addiction and Mental Health (Canada), and Lithuanian University of Health Sciences (Lithuania), with the involvement of national partners from Estonia, Latvia and Poland.

Research supported by the National Institute on Alcohol Abuse and Alcoholism of the National Institutes of Health (NIAAA), **grant number 1R01AA028224-01**.

Content is the responsibility of the authors and does not reflect official positions of NIAAA or the National Institutes of Health.