

Dose to pelvic lymph nodes in locally advanced cervical cancer during high-dose-rate brachytherapy with tandem-ring applicators

Mona Malekzadeh Moghani, MD^{1,2}, Zahra Siavashpour, PhD¹, Oleksander Ogorodniitchouk, MD², Pablo Moreno-Acosta, MD, PhD³, Delphine Plattard, PhD², Alexis Vallard, MD², Sandrine Sotton², Wafa Boulefour, PhD², Julien Langrand-Escure, MD², Nicolas Magné, MD, PhD²

¹Department of Radiation-Oncology, Shohadaye Tajrish Educational Hospital, Shahid Beheshti University of Medical Sciences, Teheran, Iran,

²Department of Radiotherapy, Lucien Neuwirth Cancer Institute, Saint-Etienne, France, ³Research group in Cancer Biology, Research Branch, National Cancer Institute, Bogota, Colombia

Abstract

Purpose: The present study aimed to assess the correlation between dose to pelvic lymph nodes and to point B with tandem-ring (TR) applicators for intra-cavitary brachytherapy treatment of locally advanced cervical cancer.

Material and methods: Cervical cancer patients treated at brachytherapy department of Lucien Neuwirth Cancer Center, from 2015 to 2018, were included. Target delineation was performed in compliance with GEC-ESTRO guidelines. Revised American Brachytherapy Society (ABS) point A was determined (A_{RN} (right) and A_{LN} (left)) as well as Manchester point B. Prescription dose was 25-35 Gy in 5 fractions. Pelvic lymph nodes were delineated, then dose to points A and B, and dose-volume histogram (DVH) parameters of delineated lymph nodes were extracted. Significant relationships or correlations between lymph nodes reference points, dosage to points B, and their DVH parameters were investigated.

Results: The mean dose and mean percentage of the prescription dose to the left and right points B were 4.6 ± 0.18 Gy and $82.08 \pm 0.72\%$, respectively. Pearson correlation coefficient $R = 0.81$ (p -value = 0.00) between dose to A_{RN} and A_{LN} points and prescription dose was obtained. Negative correlation between CTV_{HR} volume and difference between French and ABS prescription points was found.

Conclusions: Dose to point B can be a moderate surrogate for maximum, minimum, and median dose to the internal iliac and presacral lymph node, but cannot be for maximum dose to the obturator lymph node. Points B cannot be a reliable substitute for common and external iliac chains.

J Contemp Brachytherapy 2022; 14, 2: 183-188

DOI: <https://doi.org/10.5114/jcb.2022.115330>

Key words: brachytherapy, cervical cancer, pelvic lymph node, tandem-ring applicator, point B.

Purpose

External beam radiation therapy (EBRT) in combination with high-dose-rate (HDR) brachytherapy (BT) is now considered as the definitive treatment strategy of locally advanced cervical cancer. The gold standard in adaptive brachytherapy is image-guided adaptive brachytherapy (IGABT), which enables individualized treatment planning and delivery [1].

Lymph node metastases are common in locally advanced cervical cancer patients. According to previous research of Liu *et al.*, the obturator and external iliac nodes are the most frequently metastasis [2]. Furthermore, RetroEMBRACE cohort studies showed that pelvic failures account for 13% of treatment relapse following

cervical cancer chemoradiation therapy [3]. Therefore, dose to pelvic lymph nodes is crucial to be determined during treatment time and clinical decision-making for any potential future relapse.

Nowadays, among all BT applicators, computed tomography (CT)/magnetic resonance imaging (MRI) compatible tandem-ovoid (TO) and tandem-ring (TR) intra-cavitary applicators are the most commonly used to treat locally advanced cervical cancers, with or without gross target volume (GTV) residue after EBRT. With a TR applicator, insertion is more comfortable, and reproducibility is better for patients with a narrow vagina or obliterated fornix [4]. Some studies investigated the difference in resulting dose distribution using these two applicator types [5, 6]. Indeed, the dose to organs at risk (OARs)

Address for correspondence: Dr Boulefour Esquis Wafa, Department of Medical Oncology, Institut de Cancérologie Lucien, Neuwirth Saint-Priest-en-Jarez, 108 bis avenue Albert Raimond, 42270 Saint-Priest-en-Jarez, France, phone: +33-4-77917470, fax: +33-4-77917497,

✉ e-mail: wafa.boulefour@icloire.fr

Received: 26.07.2021

Accepted: 16.02.2022

Published: 06.04.2022

during BT procedure differs according to applicator set: TO or TR ICRU-related point dose and [7]. While radiation oncologist's manually delineated contours are considered as the gold standard in current clinical practice, manual delineation of all regions of interest (ROIs), such as pelvic lymphatic chains, is time-consuming, labor-intensive, and difficult in radiation therapy planning [8]. Historically, the absorbed dose at Manchester point B was used to estimate the cumulative absorbed dose to the internal iliac and obturator lymph nodes as well as the pelvic sidewall from BT and EBRT. In addition, recent Siavashpour *et al.* study on HDR-BT of cervical cancer with ^{60}Co source, discovered certain correlation between the external iliac hot points and point B [9].

These findings demonstrate that it is clinically prudent to know the dose to the pelvic lymph nodes and their relationship with easily definable Manchester point B dose during cervical cancer BT, using any clinically familiar source and applicator set. Therefore, the purpose of this study was to determine the correlation between dose delivered to the pelvic lymph nodes and point B using TR applicators for intra-cavitary brachytherapy treatment of locally advanced cervical cancer.

Material and methods

The current study was a retrospective study conducted at Lucien Neuwirth Cancer Center (Saint-Priest-en-Jarez), France. The study, which was carried out in accordance with the Helsinki Declaration, was authorized by the institutional ethics committee. Patients medical data were used in this retrospective study, and oral and written informed consent was obtained.

Case selection and pre-planning

Cervical cancer patients treated by intensity-modulated radiotherapy (IMRT) or 3D conformal radiotherapy alone to a total dose of 45-50.4 Gy with concurrent weekly cisplatin-based chemotherapy at Lucien Neuwirth Cancer Center, from 2015 to 2018, were included in this study. Additional boost phase to the involved lymph node was prescribed to reach a cumulative dose of 50.4 Gy. Once EBRT was completed, T2- and T1-weighted MRI were obtained before first BT fraction, to determine any gross residual tumor without applicator in situ. Only patients without any interstitial BT component were considered for inclusion into the study.

Patient preparation and applicator insertion

Each patient had a soft diet for 24 hours, after which fasted for 12 hours before applicator insertion. TR brachytherapy applicator insertion was performed under epidural sedation in the operation room before first brachytherapy session. Bladder Foley catheter, with a contrast-filled balloon (1 cm³ contrast plus 6 cm³ normal saline) and a rectal retractor were also inserted. Tandem ring-applicator sets were applied (Varian Medical Systems, Palo Alto, CA, USA). Plastic caps of ring applicator were in place to avoid excessive dose to vagina mucosa.

Imaging, contouring, and treatment planning

A pelvic CT scan with a slice thickness of 2 mm was performed. At EBRT completion, a pelvic MRI was used to achieve BT target delineation. Images were imported to treatment planning system (Eclipse; Varian Medical Systems, Palo Alto, CA, USA). Applicator reconstruction, high-risk clinical target volume (CTV_{HR}), and low-risk clinical target volume (CTV_{LR}) delineation were performed in compliance with the Groupe Européen de Curiethérapie – European Society for Radiotherapy and Oncology (GEC-ESTRO) guidelines [10-12]. Prescription points were set 15 mm along the tandem ring and 10 mm perpendicular to the tandem in the right and left directions. The revised American Brachytherapy Society (ABS) point A was obtained by drawing a line connecting the mid-dwell positions of the ring. Moving superiorly along the tandem 2 cm plus the thickness of the ring (including the cap), and then 2 cm perpendicularly to the tandem in the lateral direction, starting at the junction of this with the tandem [12]. These points were called A_{RN} (right ABS new point) and A_{LN} (left ABS new point). However, during the current study, these prescription points were named French prescription points (A_{RF}: right French and A_{LF}: left French). Furthermore, Manchester left and right points B (i.e., B_L and B_R, respectively) were also determined at 5 cm laterally from the midline, but at the level of ABS points A [5-14]. BT prescription dose was 25-35 Gy in 5 fractions. Prescription dose range was determined using linear quadratic equation (i.e., well-known total equieffective dose concept and EQD₂ formula), with α/β of 10 for tumor and 3 for OARs. One applicator insertion was done in five subsequent treatment fractions for three days in a row. Patients were hospitalized, and at least 8 hours intervals were kept between each exposure. However, imaging was done before each fraction to confirm applicators' and OARs positions. Inverse treatment planning with further manual optimization was performed for each patient, so that the 100% isodose curve covered the ring surface.

Organ at risk and target delineation

The bladder and rectum were contoured as OARs. OAR dose constraint was defined as 70-75 Gy and 90 Gy to D_{2cm3} (dose to maximum exposed 2 cm³ of organ volume) of the rectum/sigmoid and bladder, following EQD₂ formula, respectively. Lymph node delineation was performed in compliance with latest comprehensive reference published by JCOG [15]. Moreover, to delineate obturator lymph node, a higher margin was applied by using an 18 mm brush, as explained in Taylor guidelines [16]. Another radiation oncologist double-checked all the targets, OARs, and lymph node delineation. All the determined points described above were positioned by an expert brachytherapy medical physicist to minimize inter-observer uncertainty (Figure 1). The approved plan was exported to GammaMed Plus HDR afterloader (Varian Medical Systems, Palo Alto, CA, USA).

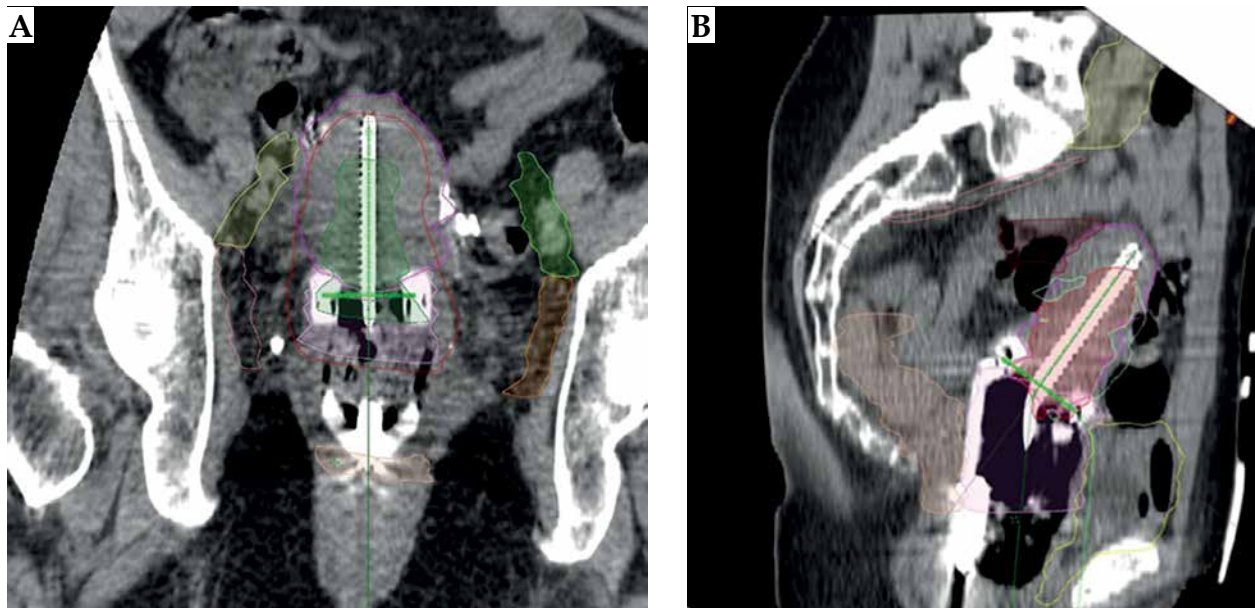


Fig. 1. Pelvic CT with its' delineated pelvic nodes

Data extraction

Dose to points A and B as well as dose-volume histogram (DVH) parameters of delineated lymph nodes were extracted. Obtained DVH parameters of lymph nodes included D_{98} (dose to 98% of organ volume) as near-minimum dose, D_{2cm^3} as near-maximum dose, and D_{50} (dose to 50% of organ volume) as organ median dose [17].

Statistical analysis

Descriptive analysis was performed and patients and treatment characteristics were recorded. *T*-test was used to assess for any significant relationship between the extracted data. Moreover, a correlation between these averaged differences and target volume were evaluated. A correlation between the extracted DVH parameters and the prescribed dose was studied through linear regression analysis and Pearson correlation tests by considering a statistical significance level of 0.05 (p -value < 0.05). Finally, correlations between DVH parameters of delineated pelvic lymph nodes and point B dose were assessed. IBM SPSS® statistics (version 23, IBM Corp.) software was used to perform statistical tests.

Results

Descriptive statistics

Thirty-six stage IB1-IIIb cervical cancer patients were included in the study. The median age was 60 years (range,

29-88 years), and CTV_{HR} volume was 25.3 ± 16.5 cm³. The descriptive data about their target and OARs doses are presented in Table 1. The mean radiation dose and mean percentage of prescription dose on the delineated lymph nodes are shown in Table 2. The mean dose and mean percentage of the prescription dose to the left and right B points were 4.6 ± 0.18 Gy and $82.08 \pm 0.72\%$, respectively. The mean prescription dose to A_{RF} and A_{LF} points was 26.6 ± 2.9 Gy for the patients.

T-test and correlation analysis

A Pearson correlation coefficient (R) $R = 0.81$ (p -value = 0.00) was obtained between the mean dose of the A_{RN} and A_{LN} points and the prescription dose. The p -value for paired-sample *T*-test between the dose to A_{RN} and A_{LN} points became 0.00. A negative correlation with $R = 0.34$ (p -value = 0.04) and $RC = 0.2$ was obtained between CTV_{HR} volume and difference between French and ABS prescription points. Table 2 demonstrates the results of descriptive analysis of considered parameters. Figure 2 shows the maximum dose to the internal iliac and the minimum dose to the obturator chain with dose to points B. A Pearson correlation coefficient of $R = 0.76$ was found, with $RC = 0.31$ (p -value = 0.00) for correlation assessment between average dose to point B and prescription dose to each case. There was a low standard deviation between the dose to the left and right B points ($\overline{SD} = 0.18$ Gy). Therefore, the correlation between the mean dose of B points and lymph node DVH parameters was calcu-

Table 1. Descriptive statistics for patients DVH parameters

	CTV_{IR}	CTV_{HR}	Rectum (Gy)	Bladder (Gy)
	D_{90} (Gy) Mean \pm SD	D_{90} (Gy) Mean \pm SD	D_{2cm^3} (Gy) Mean \pm SD	D_{2cm^3} (Gy) Mean \pm SD
BT dose	9.4 \pm 3.7	22.2 \pm 7.1	12.6 \pm 4.5	18.1 \pm 3.1
BT + EBRT (EQD ₂)	58.3 \pm 11.5	76.0 \pm 13.9	55.3 \pm 12.3	66.0 \pm 13.3

Table 2. DVH parameters of pelvic lymph nodes as well as the results of a correlation study between these parameters and prescription dose and mean dose of points B

	$D_{\text{mean}} \pm \text{SD}$ (Gy)	$\text{Dif}_{\text{mean}} \pm \text{SD}$ (%)	R_{PD}	RC_{PD}	$p\text{-value}_{\text{PD}}$	$R_{\bar{B}}$	$RC_{\bar{B}}$	$p\text{-value}_{\bar{B}}$
Common iliac								
D ₉₈	0.6 ±0.3	97.7 ±1.1	0.53	0.07	0.00	0.44	0.16	0.01
D ₂	1.4 ±0.8	94.6 ±2.9	0.46	0.15	0.01	0.46	0.40	0.01
D ₅₀	0.9 ±0.4	96.6 ±1.4	0.55	0.10	0.00	0.48	0.22	0.01
Pre-sacral								
D ₉₈	1.4 ±0.6	94.7 ±2.2	0.46	0.13	0.01	0.61	0.41	0.00
D ₂	2.4 ±1.2	90.8 ±4.2	0.47	0.25	0.00	0.59	0.78	0.00
D ₅₀	1.9 ±0.9	92.7 ±3.1	0.51	0.21	0.00	0.65	0.64	0.00
Rt external iliac								
D ₉₈	1.3 ±0.7	95.0 ±2.6	0.27	0.08	0.11	0.39	0.29	0.17
D ₂	3.5 ±1.1	86.2 ±4.2	0.38	0.20	0.02	0.56	0.72	0.00
D ₅₀	2.1 ±0.7	91.9 ±2.5	0.43	0.13	0.01	0.61	0.47	0.00
Lt external iliac								
D ₉₈	1.1 ±0.5	95.5 ±1.7	0.42	0.09	0.01	0.56	0.30	0.00
D ₂	3.5 ±1.7	86.3 ±6.6	0.28	0.22	0.10	0.43	0.83	0.01
D ₅₀	2.1 ±0.9	91.9 ±3.4	0.35	0.14	0.04	0.49	0.50	0.00
Rt internal iliac								
D ₉₈	1.3 ±0.6	94.9 ±2.0	0.55	0.15	0.001	0.61	0.40	0.00
D ₂	3.4 ±1.3	86.5 ±4.6	0.60	0.36	0.000	0.74	1.10	0.00
D ₅₀	2.1 ±0.8	91.8 ±2.8	0.60	0.22	0.000	0.73	0.67	0.00
Lt internal iliac								
D ₉₈	1.3 ±0.7	94.9 ±2.3	0.53	0.16	0.001	0.58	0.43	0.00
D ₂	3.3 ±1.5	87.2 ±5.4	0.50	0.35	0.002	0.63	1.06	0.00
D ₅₀	2.0 ±0.9	92.0 ±3.0	0.58	0.24	0.000	0.69	0.69	0.00
Rt obturator								
D ₉₈	2.1 ±0.6	91.7 ±2.2	0.47	0.13	0.004	0.64	0.44	0.00
D ₂	6.6 ±2.3	73.8 ±8.8	0.30	0.25	0.160	0.36	0.91	0.03
D ₅₀	3.5 ±1.1	86.2 ±3.9	0.41	0.20	0.013	0.58	0.69	0.00
Lt obturator								
D ₉₈	2.1 ±0.6	91.9 ±2.3	0.47	0.14	0.004	0.65	0.47	0.00
D ₂	6.5 ±2.6	74.4 ±10.3	0.22	0.26	0.206	0.34	1.02	0.04
D ₅₀	3.4 ±1.1	86.4 ±4.2	0.41	0.21	0.014	0.59	0.76	0.00

D_{mean} – radiation doses averaged across delineated lymph node, Dif_{mean} – mean relative difference between prescription dose and averaged dose across delineated lymph node ($\frac{\text{Lymph node dose} - \text{prescribed dose}}{\text{prescribed dose}} \times 100$), R – Pearson's correlation coefficient, RC_{PD} – regression coefficient, PD – prescription dose, \bar{B} – mean dose to left and right B points

lated. These correlation results are also presented in Table 2.

Discussion

The results in Table 2 pointed out that there was some low to moderate correlation between the prescription dose and the dose to the pelvic lymph nodes. High standard deviation of the lymph nodes DVH parameters, especially their $D_{2\text{cm}^3}$, emphasizes the necessity to perform an individualized assessment of the dose to these organs. However, moderate to high correlations between DVH parameters of the pelvic lymph nodes and historical points B were shown. Initially, the absorbed dose to

the left and right ICRU points B was expected to correspond to adjacent internal iliac and obturator lymph nodes absorbed dose [18]. In the present study, all pelvic lymph nodes were studied to determine if there was any correlation between dose to ICRU points B and other node groups. When Pearson correlation coefficients were between 0.5 to 0.7 and 0.7 to 0.9, correlation was interpreted as moderate and high, respectively. When the coefficient was positive, the correlation was termed direct, whereas negative correlation was termed indirect [19]. The correlation test results between the mean dose of the A_{RN} and A_{LN} points and the prescription dose indicate a positive and strong correlation. Paired sample T -test resulted in a significant ($p\text{-value} = 0.00$) relation-

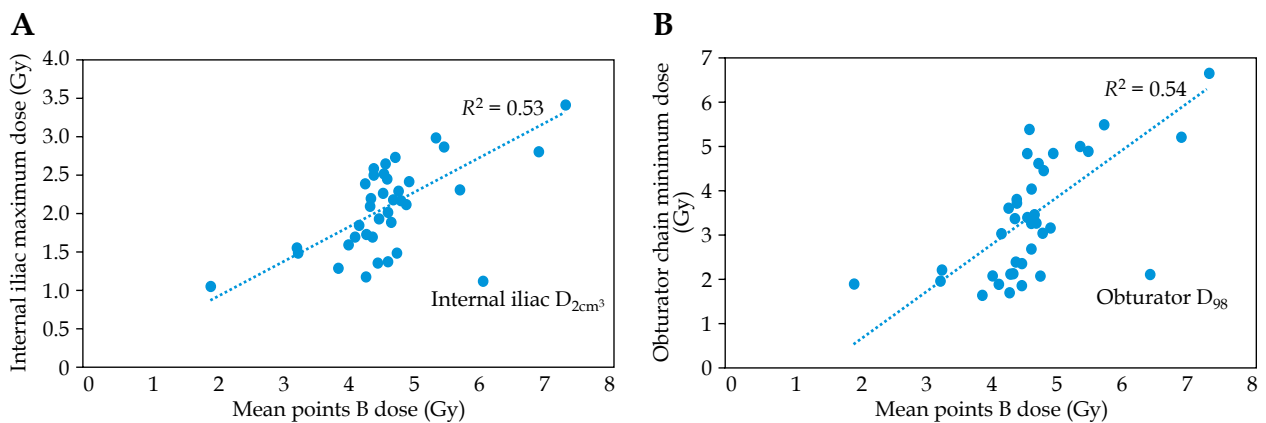


Fig. 2. Correlation between dose maximum dose to the internal iliac (A) and the minimum dose to obturator chain (B) with points B dose

ship between the prescription dose and the ABS points dose. A negative correlation between CTV_{HR} volume and difference between French and ABS prescription points means that by every 1 cm^3 increase in target volume difference between these two definition strategies decreased by 0.2%, as expected due to increased ring radius and similarity in positions of two prescription points set. On the other hand, a high ($R > 0.7$) and significant correlation was obtained between points B and prescription. By every 1 Gy prescription dose, point B dose enhancement would increase by 0.31 Gy. However, despite the obturator lymph nodes, dose to point B underestimated the maximum dose to the pelvic node chain (Table 2). The maximum dose to the obturator nodes (range, 6.5-6.6 Gy) was about 40% higher than to the point B. The maximum dose was about 75% of the point B dose for the internal and external nodal chains. The most significant difference was for the common iliac group maximum dose, which was about 30% of the points B dose. The difference was higher between the minimum dose to these lymphatic chains and the B points. The higher minimum dose was observed to the obturator group, with about 50% of the point B dose. Point B dose (i.e., 4.6 ± 0.18) was about three times the minimum dose to the internal and external iliac chain (i.e., D_{98} of these lymph nodes in Table 2), which would tend to support Gebara *et al.* study results [20]. Minor discrepancies can occur because they reported a higher minimum internal iliac dose and did not consider the near-minimum dose (D_{98}) concept. Chua *et al.* also tried to quantify brachytherapy dose contribution to pelvic nodal groups following the Manchester system [6]. They prescribed the planning dose to Manchester point A and assessed the resulting mean pelvic lymph node dose. They concluded that the pelvic nodal groups received 15.9% (for the external iliac group) up to 30.1% (for the obturator group) of prescription dose. They did not consider pre-sacral and common iliac lymph nodes. D_{50} of obturator chains received the most absorbed dose in the current study, while they were only 15% of the prescribed dose to the A_{RF} and A_{LF} . This discrepancy was expected, because the distance between the prescription point and the pelvic lymph nodes in the current study was greater than the Manchester or ABS points. Dose to the internal

iliac lymph nodes correlated with the prescription dose ($R = 0.5-0.6$). By every 1 Gy increase to prescription dose, about 0.35 Gy increase in near max dose of right and left internal iliac chains would be expected, referring to the obtained RC_{PD} (Table 2). This correlation is moderate but statistically significant (p -value < 0.05). Pearson correlation coefficients of the near minimum and median dose indicated a moderate correlation (> 0.5) for the common iliac lymph nodes, but with a low RC. With every 1 Gy prescription dose growth, just a 0.15 Gy increase in these DVH parameters may occur. Other correlation tests between prescription dose and DVH parameters of the pelvic lymph nodes were weak and unreliable. A moderate and positive correlation (p -value = 0.00) was obtained between the dose to the pre-sacral lymph node and the point B dose. Previous related studies did not assess pre-sacral lymph nodes. According to Liu *et al.*, metastatic pattern recurrence in this lymphatic chain is rare for locally advanced cervical cancer patients. However, these lymph nodes have been almost included in EBRT treatment fields [2]. Moderate to high and positive correlations were obtained between dose to internal iliac lymph node and mean dose of points B. For example, it can be interpreted that by every 1 Gy increase to prescription dose, their near maximum dose (D_{2cm^3}) may increase by about 1.1 Gy. However, there were some weak to moderate correlations between the external iliac DVH parameters and the mean dose to point B. Near minimum (D_{98}) and median dose (D_{50}) to the obturator lymph nodes presented moderate but statistically significant correlation with the points B dose. D_{2cm^3} of these lymph nodes showed weak correlations ($R = 0.34$ and 0.36 for the left and right ones, respectively) to points B dose [18, 19]. In addition, there were weak correlations between common iliac lymph node DVH parameters and points B dose based on the present study results. However, Gebara *et al.* found good agreement between point B dose and maximum common iliac nodal dose in cervical cancer patients treated with Fletcher-Suit-Delclos applicator set [20]. Such contradicting results can be due to difference in applicator sets or point A definition protocol.

Lee *et al.* found that dose to point B and D_{2cm^3} of the obturator lymph nodes and $D_{0.1cm^3}$ of the external iliac

chain were not significantly different after evaluating the correlation between point B and pelvic lymph node dose in HDR brachytherapy of cervical cancer [5]. They only considered internal and external iliac chains and the obturator lymph node groups. $D_{0.1cm^3}$ was not assessed in the current study; nonetheless, there was a significant correlation between all retrieved lymph node DVH parameters, except the near minimum of external iliac chains. In the case of a follow-up or recurrence, the accumulative dosage to the lymph node delivered by EBRT plus brachytherapy may be of particular importance. Furthermore, when there is evidence of pathological lymph node involvement, paying attention to lymph node dosage is even more important.

Conclusions

Dose contribution to the pelvic lymph nodes during HDR brachytherapy is significant and must be managed carefully. The current study show that the dose to point B can be moderate to good surrogate for the maximum, minimum, and median dose to the internal iliac and presacral lymph node, but cannot be for the maximum dose of obturator lymph node. Moreover, points B cannot be reliable substitutes for common and external iliac chains.

Disclosure

The authors report no conflict of interest.

References

- Song J, Alyamani N, Bhattacharya G et al. The impact of high-dose-rate brachytherapy: measuring clinical outcomes in the primary treatment of cervical cancer. *Adv Radiat Oncol* 2020; 5: 419-425.
- Liu Z, Hu K, Liu A et al. Patterns of lymph node metastasis in locally advanced cervical cancer. *Medicine (Baltimore)* 2016; 95: e4814.
- Tan LT, Pötter R, Sturdza A et al. Change in patterns of failure after image-guided brachytherapy for cervical cancer: analysis from the RetroEMBRACE study. *Int J Radiat Oncol Biol Phys* 2019; 104: 895-902.
- Gursel SB, Serarslan A, Meydan AD et al. A comparison of tandem ring and tandem ovoid treatment as a curative brachytherapy component for cervical cancer. *J Contemp Brachytherapy* 2020; 12: 111-117.
- Lee LJ, Sadow CA, Russell A, Viswanathan AN. Correlation of point B and lymph node dose in 3D-planned high-dose-rate cervical cancer brachytherapy. *Int J Radiat Oncol Biol Phys* 2009; 75: 803-809.
- Chua GWY, Foo YW, Tay GH, Tan DBH. Assessing dose contribution to pelvic lymph nodes in intracavitary brachytherapy for cervical cancer. *J Contemp Brachytherapy* 2017; 9: 345-353.
- Levin D, Menhel J, Rabin T et al. Dosimetric comparison of tandem and Ovoids vs. tandem and ring for intracavitary gynecologic applications. *Med Dosim* 2008; 33: 315-320.
- Winkler C, Duma MN, Popp W et al. Protection of quality and innovation in radiation oncology: the prospective multicenter trial QUIRO of DEGRO: evaluation of time, attendance of medical staff, and resources during radiotherapy with tomotherapy. *Strahlenther Onkol* 2014; 190: 950-956.
- Siavashpour Z, Aghili M, Anjidani S et al. Dose to pelvic lymph nodes during brachytherapy of locally advanced cervical cancer with ^{60}Co HDR source. *Brachytherapy* 2021; S1538-4721(21)00487-6.
- Pötter R, Haie-Meder C, Van Limbergen E et al. Recommendations from gynaecological (GYN) GEC ESTRO working group (II): concepts and terms in 3D image-based treatment planning in cervix cancer brachytherapy-3D dose volume parameters and aspects of 3D image-based anatomy, radiation physics, radiobiology. *Radiother Oncol* 2006; 78: 67-77.
- Haie-Meder C, Pötter R, Van Limbergen E et al. Recommendations from Gynaecological (GYN) GEC-ESTRO Working Group (I): concepts and terms in 3D image based 3D treatment planning in cervix cancer brachytherapy with emphasis on MRI assessment of GTV and CTV. *Radiother Oncol* 2005; 74: 235-245.
- Hellebust TP, Kirisits C, Berger D et al. Recommendations from Gynaecological (GYN) GEC-ESTRO Working Group: considerations and pitfalls in commissioning and applicator reconstruction in 3D image-based treatment planning of cervix cancer brachytherapy. *Radiother Oncol* 2010; 96: 153-160.
- Nag S, Erickson B, Thomadsen B et al. The American Brachytherapy Society recommendations for high-dose-rate brachytherapy for carcinoma of the cervix. *Int J Radiat Oncol Biol Phys* 2000; 48: 201-211.
- Anderson J, Huang Y, Kim Y. Dosimetric impact of point A definition on high-dose-rate brachytherapy for cervical cancer: evaluations on conventional point A and MRI-guided, conformal plans. *J Contemp Brachytherapy* 2012; 4: 241-246.
- Japan Clinical Oncology Group, Toita T, Ohno T, Kaneyasu Y et al. A consensus-based guideline defining the clinical target volume for pelvic lymph nodes in external beam radiotherapy for uterine cervical cancer. *Jpn J Clin Oncol* 2010; 40: 456-463.
- Taylor A, Rockall AG, Reznick RH, Powell MEB. Mapping pelvic lymph nodes: guidelines for delineation in intensity-modulated radiotherapy. *Int J Radiat Oncol Biol Phys* 2005; 63: 1604-1612.
- Dose and Volume Parameters for Prescribing, Recording, and Reporting Brachytherapy, Alone and Combined with External-Beam Radiotherapy. *J ICRU* 2013; 13: 105-122.
- Report 89. *J ICRU* 2013; 13: NP.
- Mukaka MM. Statistics corner: A guide to appropriate use of correlation coefficient in medical research. *Malawi Med J* 2012; 24: 69-71.
- Gebara WJ, Weeks KJ, Jones EL et al. Carcinoma of the uterine cervix: a 3D-CT analysis of dose to the internal, external and common iliac nodes in tandem and ovoid applications. *Radiother Oncol* 2000; 56: 43-48.