

A novel intracavitary applicator design for the treatment of deep vaginal fornices: preliminary dose metrics and geometric analysis

Antonio L. Damato, PhD, Robert A. Cormack, PhD, Akila N. Viswanathan, MD, MPH
Dana-Farber Cancer Institute/Brigham and Women's Hospital, Boston, USA

Abstract

Purpose: To investigate the dose distributions associated with a novel balloon sleeve placed over a standard cylinder applicator.

Material and methods: A computed tomography (CT) scan of a sleeve balloon shaped to inflate into the vaginal fornices was used to digitize 1-, 3-, and 5-catheter configurations. Point doses for rectum, apex, and fornix were calculated and compared to the values associated with a standard cylinder plan not targeting the vaginal fornices. Inflation of the sleeve balloon in the vaginal fornices and dose coverage with constraints to the rectum, bladder, and sigmoid D_{2cc} were evaluated.

Results: Rectum, apex, and fornix doses were respectively 76%, 119%, and 44% for a standard cylinder; 190%, 310%, and 93% for a 1-catheter configuration; 98%, 109%, and 109% for a 3-catheter configuration; and 91%, 107%, and 96% for the 5-catheter configuration. In a patient analysis, expansion of the sleeve balloon into the vaginal fornices was confirmed. The 5-catheter configurations were associated with best coverage of the fornices and acceptable doses to rectum, bladder, and sigmoid.

Conclusions: A 1-catheter configuration cannot be used clinically due to high rectal and apex dose. In theoretical analysis, the 3- and 5-catheter configurations showed > 96% coverage to the vaginal fornices with a clinically acceptable rectal dose. In a treatment simulation in a patient, a 5-catheter configuration showed 90% coverage of the fornices with acceptable doses to the organs at risk. The treatment of deep vaginal fornices results in an increased rectal dose compared to a standard cylinder plan.

J Contemp Brachytherapy 2015; 7:
DOI: 10.5114/jcb.2015.49017

Key words: brachytherapy, intracavitary, vaginal fornices, multi-channel, applicator.

Purpose

Vaginal-cuff brachytherapy is commonly administered as an adjuvant treatment for post-hysterectomy endometrial-cancer patients [1]. A single-channel domed-cylinder applicator provides coverage of the vaginal mucosa with acceptable toxicity and excellent local control [2-4], and it is also indicated for the treatment of small vaginal cancers with a thickness < 5 mm [5]. This applicator has 3 dosimetric shortcomings: 1) the possible dose reduction to the vaginal mucosa due to air gaps that may occur between the surface of the cylinder and the vaginal wall [1,6,7]; 2) the limited capability of dose shaping due to the single-channel geometry of the applicator; and 3) the difficulty of reaching the tissue of deep vaginal fornices [1], where local failures have been reported [8].

To address these shortcomings, the balloon-based, multi-channel Capri™ applicator (Varian Medical Systems, Palo Alto, CA, USA) has been developed to increase

dose shaping capabilities and minimize air gaps. However, the Capri™ applicator design does not address the difficulty of dosing deep fornices.

We recently designed a cylinder sleeve consisting of an inflatable balloon to be positioned over a vaginal cylinder that may provide more reproducible localization of the fornices with decreased air gaps (Fig. 1). This balloon is non-cylindrical and provides a “dog-ear” shape at the apex of the balloon that may be able to conform better to deep vaginal fornices. In this pilot study, using a prototype of this new applicator design, we analyzed the dose metrics associated with single- and multi-channel configurations based on the cylinder sleeve design, followed by an analysis of the use of this applicator design in a patient.

Material and methods

A balloon-based cylinder sleeve (referred to henceforth as balloon-sleeve applicator), depicted in Figure 1, was de-

Address for correspondence: Antonio L. Damato, PhD, Department of Radiation Oncology, Brigham and Women's Hospital, ASB1, L2, 75 Francis Street, Boston, MA 02115, USA, phone: +1 617-525-7242, e-mail: adamato@lroc.harvard.edu

Received:
Accepted:
Published:

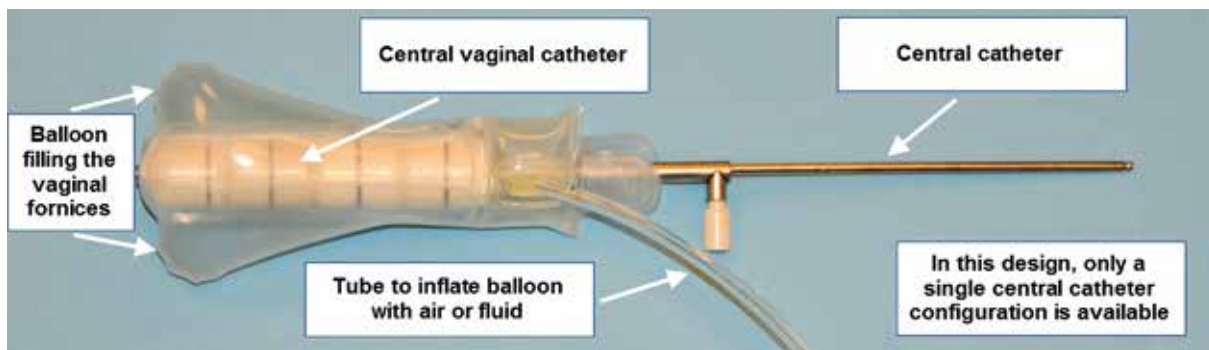


Fig. 1. An example of the sleeve balloon inserted over a vaginal cylinder and inflated with air

signed by Dr. Viswanathan, then licensed to Radiadyne (Houston, TX, USA), which built a prototype. This was evaluated for its applicability to vaginal treatments [9].

Theoretical evaluation

The sleeve was inserted over a cylinder and inflated with 40 cm³ of water, and a computed tomography (CT) scan with the applicator in air was acquired. The sleeve surface was manually segmented on CT to obtain a digital model of the sleeve shape. Various configurations of one or more catheters, all with 2.5-mm step size dwell locations, were simulated. A treatment length of 50 mm was used. A clearance of 7 mm was respected between the simulated tip location and the superior border of the applicator. This clearance is needed to ensure that the catheters can physically be mounted into the balloon; a similar clearance is observed in commercial multi-channel balloon applicators. One-, 3-, and 5-catheter configurations were analyzed.

For the 1-catheter configuration (cylinder + sleeve), a single virtual catheter was digitized in the central axis of the digital model of the sleeve applicator (Fig. 2A). This configuration provided the dosimetry associated with the use of a straight-line vaginal cylinder for treatment of the balloon-sleeve geometry, with attempted coverage of the vaginal fornices. For the 3-catheter configuration, two additional virtual catheters were digitized for each CT slice, both equidistant from the central one as shown in Fig. 2B. The two additional catheters were parallel to the sleeve surface and followed its shape along its length. Seven possible distances d between sleeve surface and catheters were investigated, from $d = 0$ mm to $d = 15$ mm, in 2.5-mm increments. Two distinct 5-catheter configurations were explored: a coplanar configuration and a cross-shaped configuration. The 5-catheter coplanar configuration consisted of a central-axis catheter and four in-line catheters, symmetrically positioned and each following the sleeve surface shape at distances of 5 mm and 12.5 mm from the balloon surface (Fig. 2C). The 5-catheter cross configuration consisted of one central-axis catheter, two catheters on the largest coronal cross section, and two catheters on the largest sagittal cross section, each at a distance of 5 mm from the balloon surface (Fig. 2D).

Each catheter configuration was optimized with inverse planning simulated annealing (IPSA) using the Oncentra

Brachytherapy planning system (Nucletron, an Elekta Company, Stockholm, Sweden). Inverse planning simulated annealing was used to eliminate the potential bias from manual or graphic optimization. Each configuration was optimized using the following optimization constraints: minimum dose to the sleeve surface of 100% of the prescription dose, and maximum dose to the sleeve surface of 150% of the prescription dose, with equal weighting. The use of each catheter by the optimizer is reported as percent loading, that is, the ratio of the total reference air kerma (TRAK) associated with a catheter by the total plan TRAK.

The rectal dose was defined as the ratio of the mean dose of rectal points 5 mm posterior to the sleeve, at 2.5-mm intervals along the treatment lengths, to the minimum dose delivered to the surface of the sleeve. The apex dose was defined as the ratio of apex (a point 7 mm superior to the top dwell position of the central catheter) dose to the minimum dose delivered to the surface of the sleeve. The fornix dose was defined as the ratio of the mean dose of the fornix points to the minimum dose delivered to the surface of the sleeve. Four fornix points were defined: the two farthest points from the central catheter on the balloon surface on the axial slice containing the top dwell position (located 27.5 mm from the central catheter, which corresponds to 10 mm away from a 35-mm cylinder surface), and two corresponding points 5 mm outside the balloon surface (Fig. 2E). Rectal, apex and fornix doses were normalized to the minimum dose delivered to the surface of the sleeve to ensure that a common normalization existed among all plans.

We compared the dosimetric indices to values associated with a standard cylinder plan, that is, a straight-line plan not targeting the vaginal fornices. Cylinder size used for comparison was a 35-mm diameter, due to the similarity between this configuration and the average diameter of the balloon-sleeve applicator (37 mm). The difference between the standard cylinder plan and the cylinder + sleeve scenario lies in the shape of the target surface. While the standard cylinder plan has a fixed geometry with a dome at the tip curving away from the fornices, the cylinder + sleeve plan targets a surface which has, on average, the same diameter but curves into the fornices and away from the central catheter at the tip. Dwell locations were at 2.5-mm step size. Optimization was performed on dose points located 17.5 mm from each dwell location,

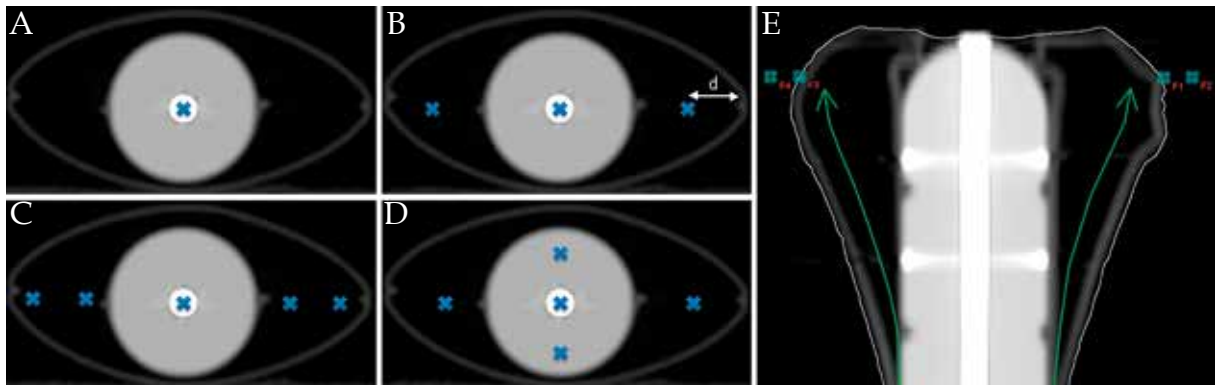


Fig. 2. Representation of the configurations discussed in this work. A) 1-catheter configuration (cylinder + sleeve), with one central catheter; B) 3-catheter configuration, with one central catheter and one additional catheter to each side at distances (marked “d” in the figure) between 0 mm and 15 mm (at 2.5-mm increments) from the balloon surface; C) 5-catheter configuration, coplanar, with one central catheter and additional catheters 5 mm and 12.5 mm from the balloon surface; D) 5-catheter configuration, cross, with one central catheter and four additional catheters 5 mm from the balloon surface; E) graphical representation of the simulated catheters and the fornix points (F1 to F4) in a coronal view. The figures are abstract depictions of the geometries under investigation, and the distances of the catheters from the sleeve surface and from the central catheter may not be to scale

as per our standard clinical practice. Fornix points and the apex points were not used in the optimization. Rectal points were redefined as 5 mm from the dose points. In the discussion on the clinical acceptability of the rectal dose, the biologically equivalent dose in 2-Gy equivalents (EQD2) formalism was used. Although this theoretical analysis is based on dose points, we assumed a threshold for an acceptable rectal dose of 70-75 Gy (EQD2), in line with volumetric thresholds seen in cervical-cancer tandem-and-ring brachytherapy [10]. Two fractionation schedules prescribed to the vaginal surface were used to calculate the rectal EQD2 dose: 6 Gy \times 5 and 4 Gy \times 6 [1,8].

In-patient evaluation

The clinical impact of the use of this applicator was preliminarily assessed on data from one patient who presented with recurrent endometrial cancer at the vaginal apex. A decision to perform magnetic resonance (MR)-guided interstitial brachytherapy was made. In order to assess the feasibility of visualizing the fornices, a 2-cm MR-compatible cylinder (Nucletron, an Elekta Company) was inserted in the inside pocket of an uninflated prototype of the balloon-sleeve; the uninflated applicator was inserted into the patient and inflated with water. The patient was then scanned using intraoperative MR imaging, and the applicator was deflated and removed prior to standard interstitial therapy, all after obtaining informed consent on an Internal Review Board (IRB) approved protocol.

Extent of the fornices was measured with and without the sleeve. The sleeve was contoured. Planning of 1-, 3-, and 5-catheter configurations of the balloon-sleeve applicator insertion was performed. Inverse planning simulated annealing optimization was performed with equal weighting. Each configuration was optimized using the following optimization constraints: minimum dose to the sleeve surface of 100% of the prescription dose, maximum dose to the sleeve surface of 150% of the prescription dose,

maximum dose to the rectum and sigmoid of 70% of the prescription dose, and maximum dose to the bladder of 90% of the prescription dose. The minimum dose to the sleeve surface and the minimum dose in the most irradiated 2-cm³ volume (D_{2cc}) of rectum, bladder, and sigmoid are reported.

Results

Theoretical evaluation

Results of the theoretical evaluation are summarized in Table 1 and Table 2. The standard cylinder plan had a rectal dose of 76%. EQD2 rectal dose was 34 Gy (6 Gy \times 5 regimen) and 22 Gy (4 Gy \times 6). Apex dose was 119%. The fornix dose was 44%, indicating that in a straight line geometry not targeting the vaginal fornices, located 10 mm from a 35 mm cylinder received 44% of the prescription dose. The 1-catheter configuration (cylinder + sleeve), with targeting of the deep vaginal fornices, achieved a fornix dose of 93%. Although this configuration showed an improvement in fornix coverage compared to the standard cylinder plan (93% vs. 44%), the rectal dose was more than double that of the standard cylinder rectal dose (194%). EQD2 rectal dose was 170 Gy (6 Gy \times 5) and 100 Gy (4 Gy \times 6), which is clinically unacceptable. Moreover, an overdose of the apex up to 312% of the prescription dose was observed. The high values of the apex and rectal doses were due to the inability of the 1-catheter configuration to acceptably conform the 100% isodose line to the complex target geometry of the deep vaginal fornices as delineated by the balloon-sleeve applicator.

Of the 3-catheter configurations, those with a distance d between balloon surface and side catheters equal to 5 mm and 7.5 mm were associated with the best results. The 5-mm 3-catheter configuration achieved coverage of 109% of the deep vaginal fornices, with rectal doses of 98% and an apex dose of 109%. EQD2 rectal dose was

Table 1. Summary of maximum surface dose, fornix dose, apex dose, and rectal dose for all configurations. Values are reported as % of the minimum dose to the target surface. The target surface is the sleeve surface for the 1-catheter, 3-catheter, and 5-catheter configurations, and is the vaginal cylinder surface for the standard cylinder plan. Rectal dose is also reported in Gy, as an EQD2 calculation with $\alpha/\beta = 3$. A value of 100% is desirable for the fornix and apex dose. The standard cylinder plan does not target the vaginal fornices, whereas the cylinder + sleeve configuration targets the vaginal fornices delineated by the balloon surface

Configuration	Maximum surface dose (%)	Fornix dose (%)	Apex dose (%)	Rectal dose		
				%	Gy (EQD2) 6 Gy x 5 regimen	Gy (EQD2) 4 Gy x 6 regimen
Standard cylinder plan	169	44	119	76	34	22
1-catheter (cylinder + sleeve)	444	93	312	194	170	100
3-catheter ($d = 0$ mm)	480	579	134	116	69	43
3-catheter ($d = 2.5$ mm)	198	194	109	110	63	39
3-catheter ($d = 5$ mm)	178	109	109	98	52	33
3-catheter ($d = 7.5$ mm)	165	90	102	94	49	31
3-catheter ($d = 10$ mm)	179	89	120	99	53	33
3-catheter ($d = 12.5$ mm)	191	86	137	104	58	36
3-catheter ($d = 15$ mm)	208	90	149	114	67	41
5-catheter coplanar	164	96	107	91	46	29
5-catheter cross	179	105	99	101	55	34

Table 2. Loading of each catheter in the theoretical configuration

Configuration	Percent loading (catheter TRAK/total TRAK), per catheter			
	Central catheter (%)	Outer left/right catheters (%)	Inner left/right catheters (%)	Anterior/posterior catheters (%)
Standard cylinder plan	100	–	–	–
1-catheter (cylinder + sleeve)	100	–	–	–
3-catheter ($d = 0$ mm)	89.9	5.1	–	–
3-catheter ($d = 2.5$ mm)	87.3	6.4	–	–
3-catheter ($d = 5$ mm)	77.2	11.4	–	–
3-catheter ($d = 7.5$ mm)	70.0	15.0	–	–
3-catheter ($d = 10$ mm)	56.6	21.7	–	–
3-catheter ($d = 12.5$ mm)	35.6	32.2	–	–
3-catheter ($d = 15$ mm)	26.5	36.8	–	–
5-catheter coplanar	50.4	19.3	5.6	–
5-catheter cross	72.7	11.3	–	2.4

TRAK – total reference air kerma

52 Gy (6 Gy \times 5) and 33 Gy (4 Gy \times 6). Hot spots exceeding 150% occur at the fornices when 3-catheter configurations with a separation between balloon surface and external catheters ≤ 2.5 mm are used, suggesting that these configurations may not be appropriate for clinical use. Our results indicate that targeting of the vaginal fornices with 3-catheter configurations with a distance between catheters and balloon surface > 2.5 mm is clinically feasible. Nevertheless, the increased dose to the deep vaginal fornices (from 44% to 109%) was accompanied by an increase in rectal dose (from 76% to 98%), suggesting that the use of the balloon-sleeve applicator should be considered only in patients who have deep fornices on clinical examination,

or those with gross disease in the fornix area requiring 100% dose. The percent catheter loading (Table 2) shows that the use of the 2 lateral catheters increases with their distance from the balloon surface, from 5.1% per catheter for $d = 5$ mm to 36.8% for $d = 15$ mm. The 5-catheter configurations showed an improvement over the 3-catheter configuration (Table 1). EQD2 rectal dose for the coplanar configuration was 46 Gy (6 Gy \times 5) and 29 Gy (4 Gy \times 6). The percent catheter loading (Table 2) shows that the anterior/posterior catheters of the 5-catheter cross configuration account each for only 2% of the total TRAK, making this configuration loading similar to the 3-catheter configuration with $d = 7.5$ mm.

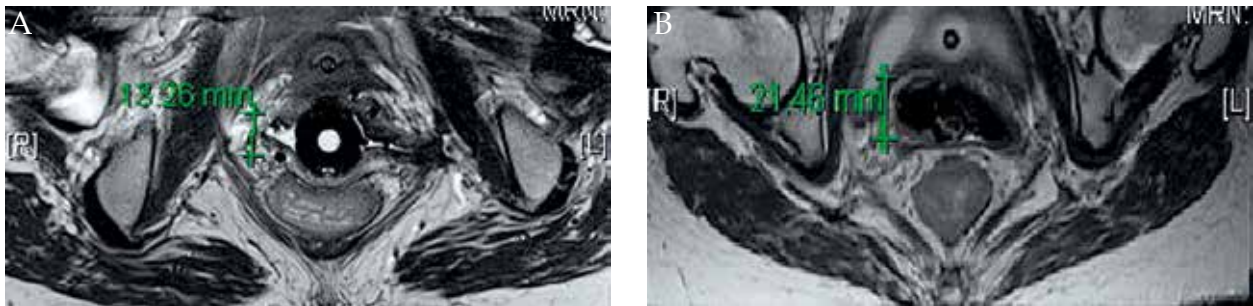


Fig. 3. Axial T2-weighted magnetic resonance images showing the standard obturator on the left surrounded by interstitial needles showing a 1.3 cm air gap in the anterior-superior dimension compared to the expanded sleeve balloon applicator filling this space up to 2.1 cm at the level of the mid-femoral head

In patient evaluation

With a standard obturator, air gaps of 13.0 mm were noted in the anterior-posterior dimension at the vaginal cuff, which were filled with the expanded sleeve to 21.5 mm (Fig. 3). The minimum dose to the sleeve surface and the rectum, bladder and sigmoid D_{2cc} from the geometries under consideration are reported in Table 3. The difference between the minimum sleeve surface dose and the D_{2cc} doses of the organs, which provides an indication of the therapeutic ratio, was negative for the 1-catheter configuration. This finding confirms that a 1-catheter configuration cannot be used with the proposed balloon-sleeve geometry. A 3-catheter (with 7.5 mm between catheters and sleeve surface) and a 5-catheter configuration provided a minimum dose to the sleeve surface higher by 14% and 23%, respectively, than the rectum D_{2cc} dose.

Discussion

We described novel multi-catheter sleeve balloon applicator designs with the goal of evaluating the coverage

of the vaginal fornices. We showed that a vaginal cylinder cannot be used to target deep vaginal fornices. Three- and 5-catheter configurations provided clinically acceptable dose to the rectum and dose inhomogeneity with coverage of the vaginal fornices exceeding 90% of the prescription dose (vs. 44% for a standard cylinder plan) but all configurations presented a rectal dose exceeding the standard cylinder rectal dose. Therefore, potential use of this applicator will likely be limited to patients who have deep fornices on clinical examination, or those with gross disease in the fornix area requiring 100% dose.

The American Brachytherapy Society Consensus Guidelines for vaginal-cuff brachytherapy [1] indicate that the shape of the vagina is a consideration in applicator selection. Domed cylinders are indicated for routine use given the generally cylindrical shape of the vagina. The use of vaginal ovoids may be considered in cases where surgical remnants of the vaginal fornices cannot be dosed satisfactorily with a domed cylinder [1]. The use of ovoids in selected cases [11], as a routine choice [12,13] or in combination with a vaginal cylinder, has been re-

Table 3. Clinical evaluation of doses to the vaginal surface and to the rectum, bladder, and sigmoid for various catheter configurations of the balloon-sleeve applicator in one patient. These data show that this balloon applicator cannot be effectively used with only one central catheter. Three- and 5-catheter configurations can be considered given a minimum dose > 80% of the prescription dose. All results are expressed as a % of the prescription dose

Configuration	Dose to the sleeve surface		Rectum D_{2cc} [%]	Bladder D_{2cc} [%]	Sigmoid D_{2cc} [%]
	Minimum (%)	Maximum (%)			
1-catheter (cylinder + sleeve)	36	196	73	49	16
3-catheter ($d = 0$ mm)	63	440	64	46	16
3-catheter ($d = 2.5$ mm)	71	183	65	47	16
3-catheter ($d = 5$ mm)	78	166	66	50	17
3-catheter ($d = 7.5$ mm)	80	161	66	51	18
3-catheter ($d = 10$ mm)	70	167	67	52	18
3-catheter ($d = 12.5$ mm)	63	174	68	53	19
3-catheter ($d = 15$ mm)	58	186	72	56	19
5-catheter coplanar	90	156	67	52	18
5-catheter cross	81	185	68	51	18

ported. The Consensus Guidelines describe limitations of the use of ovoids for vaginal-cuff treatment, such as under-dosage at the central apex [14], dose heterogeneity, and difficulty in treating the lower vagina. Those problems may contribute to less frequent adoption of vaginal ovoids compared to domed cylinders.

The ABS Consensus Guidelines for vaginal cancer [5] suggest that lesions with a thickness exceeding 5 mm cannot adequately be treated with a vaginal cylinder. Similarly, fornices extending more than 5 mm from the vaginal wall cannot be fully covered with a single-channel cylinder without overdosing the apex of the vagina. Although in most cases acceptable coverage of the fornices may be achieved, this may not be the case when the fornices are unusually large, or when residual vaginal disease in one or both fornices must be covered with 100% of the dose.

Multiple designs of multi-channel alternatives to the single-channel domed cylinder have been proposed [15-17]. Examples are the California Endocurietherapy multi-channel applicator [16], the Nucletron Vaginal CT-MR Multi Channel Applicator (Nucletron, an Elekta company), the GynSite™ intracavitary balloon (Hologic Inc., Bedford, MA, USA) [18], and the Capri™ Applicator (Varian Medical Systems) [19,20]. The Capri™ applicator has similarities to the design discussed in this paper, as both are multi-channel balloon-based designs. However, the two designs differ in many respects. The balloon shape of the Capri™ is designed to expand into a roughly cylindrical geometry, and does not offer solutions for air gaps and reproducibility in the vaginal fornices area. While these commercially available balloon applicators can eliminate air gaps along the length of the vagina, the proposed design studied in this paper is unique in its shape by the vaginal vault allowing expansion in the fornices. As the applicator expands into the fornices, fraction-to-fraction rotation of the applicator may be minimized compared to other isotropic-shaped balloon applicators, and variability in the shape of the fornices may also be minimized. The reproducibility of the setup for the balloon-sleeve applicator has not been studied in this work, and will need to be validated. The expansion of the balloon into the fornices may result in an increased dose to the apex in a single-channel design, as the target tissue is pushed further away from the central catheter and the loading of the tip dwell location is increased accordingly. In our work, we observed a 2.6 fold increase in dose to the vaginal apex (from 119% of the prescription dose to 312%) when a single-channel geometry was used to target the fornices delineated by the balloon-sleeve applicator compared to vaginal-cuff brachytherapy targeting the cylinder surface. The increase of the dose to the rectum (from 76% of the prescription dose to 194%) is associated with a clinically unacceptable rectal dose, given an EQD2 dose of 164 Gy if the 6 Gy × 5 regimen is used, or 97 Gy if the 4 Gy × 6 regimen is used. These results indicate that a standard vaginal cylinder with or without the balloon-sleeve cannot be used to properly dose deep vaginal fornices. Therefore, multi-channel designs are advisable.

The 3-catheter configuration had a central catheter and 2 lateral catheters each positioned 5 mm away from the balloon surface. The rectal dose for this configuration was 98% of the prescription dose, the apex dose was 109% of the prescription dose, and the fornix dose was 109% of the prescription dose. The rectal dose associated with this configuration was 52 Gy (6 Gy × 5) or 33 Gy (4 Gy × 6), which is clinically acceptable. These results show that the 3-catheter configuration provides coverage of the deep vaginal fornices with clinically acceptable doses to rectum and apex. Nevertheless, the rectal dose was higher than the 34 Gy (6 Gy × 5) or the 22 Gy (4 Gy × 6) associated with standard vaginal-cuff brachytherapy not targeting the vaginal fornices. Furthermore, 3-catheter geometry is more demanding on clinic resources than single-catheter geometry. However, deep vaginal fornices received 109% of the prescription dose (given a 5-mm separation between catheters and balloon surface) against only 44% in a standard cylinder. In geometries where the vaginal fornices are closer to the cylinder, it is expected that the difference in coverage will be less pronounced. The 3-catheter geometry offers a reasonably simple alternative to the use of cylinder or ovoids for the treatment of selected cases, providing coverage of both the deep vaginal fornices and the lower vagina and the elimination of air gaps, with simple insertion and positioning. A linear arrangement of 5 catheters provides slightly better dosimetry than the 3-catheter arrangement. The slight dosimetric advantage provided by the 5-catheter configuration may not justify the added cost and clinical complexity of two extra catheters.

A review of an MR of a patient with the balloon-sleeve applicator in place confirmed that the balloon deploys correctly into the vaginal fornices. A planning study of this patient configuration confirmed that a single central catheter cannot be used in conjunction with this balloon shape, as it would result in doses to the normal tissues exceeding the minimum dose to the fornices. Both 3- and 5-catheter geometries were associated with a minimum dose to the fornices higher than the D_{2cc} doses for the normal tissues. The planning study in a patient confirmed that a higher dose to the fornices can be given using the 5-catheter geometry (23% more than the rectum D_{2cc} , as compared to 14% for the 3-catheter geometry), although it is unclear if this advantage would be clinically meaningful.

This theoretical study of the dosimetric characteristics of an applicator using a novel balloon shape for the filling of vaginal fornices shows that while a single channel does not provide an acceptable treatment option for this geometry, a 3-channel or 5-channel configuration may be considered. This study will be the basis for further development of such an applicator. A limitation of this study is its theoretical nature, and actual dose to patients will vary based on patient geometry and optimization techniques. The evaluation of data from one patient presented in this work exemplifies the potential of the proposed geometry, but further data based on insertion of a multi-catheter applicator in multiple patients must be analyzed in the future for clinical validation. Moreover, while IPSA

planning was used in this theoretical study to eliminate potential bias in the optimization process, different optimization techniques may be explored. Finally, additional clinical data will provide information on the filling of the vaginal fornices by this applicator design. In particular, asymmetric filling is possible in cases with fornices of different sizes. The presence of independent channels in the two fornices allows for independent dosing in both the 3- and 5-catheter configurations.

Conclusions

A 3-catheter inflatable applicator, which expands into the vaginal fornices, offers the possibility of increasing coverage to deep vaginal fornices while minimizing the apex dose. Clinically acceptable rectal doses can be achieved, although in general the rectum would receive more dose than in standard vaginal-cuff brachytherapy not targeting the vaginal fornices. Theoretical analysis on an idealized geometry and on a representative patient anatomy showed that this design may allow the treatment of areas currently unreachable to existing intracavitary applicators, but its use should be limited to patients needing 100% dose coverage of the deep vaginal fornices. The slight dosimetric advantage provided by the 5-catheter configuration may not justify the added cost and clinical complexity of two extra catheters.

Acknowledgments

Thank you to Barbara Silver for reviewing this manuscript and to Jorgen Hansen for helping with the figures.

Disclosure

This work was partially funded by the NIH R21 CA-167800 (PI: Viswanathan).

The balloon-sleeve applicator was licensed to Radia-dyne, Inc. (Houston, TX), which built a prototype and supplied it to the authors.

Authors report no conflict of interest.

References

- Small W, Jr., Beriwal S, Demanes DJ et al. American Brachytherapy Society consensus guidelines for adjuvant vaginal cuff brachytherapy after hysterectomy. *Brachytherapy* 2012; 11: 58-67.
- Sorbe B, Straumits A, Karlsson L. Intravaginal high-dose-rate brachytherapy for stage I endometrial cancer: a randomized study of two dose-per-fraction levels. *Int J Radiat Oncol Biol Phys* 2005; 62: 1385-1389.
- Townamchai K, Berkowitz R, Bhagwat M et al. Vaginal brachytherapy for early stage uterine papillary serous and clear cell endometrial cancer. *Gynecol Oncol* 2013; 129: 18-21.
- Eltabbakh GH, Piver MS, Hempling RE et al. Excellent long-term survival and absence of vaginal recurrences in 332 patients with low-risk stage I endometrial adenocarcinoma treated with hysterectomy and vaginal brachytherapy without formal staging lymph node sampling: report of a prospective trial. *Int J Radiat Oncol Biol Phys* 1997; 38: 373-380.
- Beriwal S, Demanes DJ, Erickson B et al. American Brachytherapy Society consensus guidelines for interstitial brachytherapy for vaginal cancer. *Brachytherapy* 2012; 11: 68-75.
- Richardson S, Palaniswaamy G, Grigsby PW. Dosimetric effects of air pockets around high-dose rate brachytherapy vaginal cylinders. *Int J Radiat Oncol Biol Phys* 2010; 78: 276-279.
- Cameron AL, Cornes P, Al-Booz H. Brachytherapy in endometrial cancer: quantification of air gaps around a vaginal cylinder. *Brachytherapy* 2008; 7: 355-358.
- Townamchai K, Lee L, Viswanathan AN. A novel low dose fractionation regimen for adjuvant vaginal brachytherapy in early stage endometrioid endometrial cancer. *Gynecol Oncol* 2012; 127: 351-355.
- Damato AL, Cormack RA, Viswanathan AN. A novel high-dose-rate vaginal brachytherapy applicator: optimal catheter number and position in a balloon-based applicator as an alternative to vaginal cylinders in patients with deep fornices treated with high-dose-rate brachytherapy. *Brachytherapy* 2013; 12: S40.
- Georg P, Lang S, Dimopoulos JC et al. Dose-volume histogram parameters and late side effects in magnetic resonance image-guided adaptive cervical cancer brachytherapy. *Int J Radiat Oncol Biol Phys* 2011; 79: 356-362.
- Pai HH, Souhami L, Clark BG et al. Isolated vaginal recurrences in endometrial carcinoma: treatment results using high-dose-rate intracavitary brachytherapy and external beam radiotherapy. *Gynecol Oncol* 1997; 66: 300-307.
- Tuncel N, Garipagaoglu M, Kizildag AU et al. Optimisation techniques in vaginal cuff brachytherapy. *Br J Radiol* 2009; 82: 936-940.
- Noyes WR, Bastin K, Edwards SA et al. Postoperative vaginal cuff irradiation using high dose rate remote afterloading: a phase II clinical protocol. *Int J Radiat Oncol Biol Phys* 1995; 32: 1439-1443.
- Kim RY, Pareek P, Duan J et al. Postoperative intravaginal brachytherapy for endometrial cancer; dosimetric analysis of vaginal colpostats and cylinder applicators. *Brachytherapy* 2002; 1: 138-144.
- Tanderup K, Lindegaard JC. Multi-channel intracavitary vaginal brachytherapy using three-dimensional optimization of source geometry. *Radiother Oncol* 2004; 70: 81-85.
- Demanes DJ, Rege S, Rodriquez RR et al. The use and advantages of a multichannel vaginal cylinder in high-dose-rate brachytherapy. *Int J Radiat Oncol Biol Phys* 1999; 44: 211-219.
- Kuo HC, Mehta KJ, Yaparpalvi R et al. Feasibility study and optimum loading pattern of a multi-ring inflatable intravaginal applicator. *J Contemp Brachytherapy* 2013; 5: 93-100.
- Miller DA, Richardson S, Grigsby PW. A new method of anatomically conformal vaginal cuff HDR brachytherapy. *Gynecol Oncol* 2010; 116: 413-418.
- Park SJ, Chung M, Demanes DJ et al. Dosimetric comparison of 3-dimensional planning techniques using an intravaginal multichannel balloon applicator for high-dose-rate gynecologic brachytherapy. *Int J Radiat Oncol Biol Phys* 2013; 87: 840-846.
- Gloi AM. First clinical implementation of the Capri applicator. *J Appl Clin Med Phys* 2014; 15: 4581.