

ORIGINAL PAPER

ALDEHYDE DEHYDROGENASE-1 POSITIVITY IS ASSOCIATED WITH ER NEGATIVITY IN PATIENTS WITH INVASIVE DUCTAL CARCINOMA OF THE BREASTYAZGI KÖY¹, FIKRET DIRILENOĞLU², ÜMIT S. TETIKKURT³, ALI MUHAMMEDOĞLU³, ATILLA ÇELİK⁴¹Department of Pathology, Batman State Hospital, Batman, Turkey²Department of Pathology, Near East University, Faculty of Medicine, Cyprus³Department of Pathology, University of Health Sciences, Bağcılar Training and Research Hospital, Istanbul, Turkey⁴Department of General Surgery, University of Health Sciences, Bağcılar Training and Research Hospital, Istanbul, Turkey

Cancer stem cells (CSCs) are self-renewable and can be differentiated into different cell types. They play an important role in oncogenic signaling pathways, tumor cell heterogeneity, metastasis, and therapeutic resistance. Aldehyde dehydrogenase 1 (ALDH1) was identified as a specific marker for breast CSCs. The study included a total of 105 patients with a diagnosis of invasive ductal carcinoma (IDC) who underwent mastectomy and with sufficient pathology material for histopathological examination. Patient demographics, tumor location, tumor diameter, the presence of lymphovascular and perineural invasion and lymph node metastasis, surgical margin status, and immunohistochemistry (IHC) staining results were obtained from patients' records. The tumors were classified into IHC-based molecular subtypes according to the St. Gallen Consensus Conference in 2013. A four-tiered scoring system was used based on ALDH1 staining percentage in tumor cells. The tumor was determined as positive if the score was 2 or higher. Clinical, histopathological findings, and ALDH1 staining results were correlated. Twenty-five cases (23.8%) were ALDH1 positive. The ALDH1 positive group compared to the negative group was found to be associated with ER negativity ($p = 0.044$), but there was no correlation with other clinical and histopathological findings. ALDH1-positive IDCs may be less sensitive to hormonal therapy and associated with aggressive behavior.

Key words: aldehyde dehydrogenase 1, stem cell, breast, invasive ductal carcinoma, pathology.

Introduction

Cancer stem cells (CSCs), which are self-renewable and can be differentiated into different cell types, play an important role in oncogenic signaling pathways, tumor cell heterogeneity, metastasis, and therapeutic resistance [1, 2, 3]. The presence of CSCs has been shown in various types of malignancies, such as colon, brain, lung, and breast tumors [2, 4, 5, 6, 7]. In 2003, the breast CSCs were first isolated by their

CD44⁺CD24^{-low} surface marker expression [6]. In 2007, expression of a single marker, aldehyde dehydrogenase 1 (ALDH1), was shown to be specific for normal and malignant human breast stem cells [7].

Aldehyde dehydrogenase functions to catalyze the oxidation of aldehydes to their relevant carboxylic acids [8]. To date, 19 different ALDH functional genes and multiple splice variants have been described [9]. Aldehyde dehydrogenase 1 is one of the isoforms playing an important role in the retinoic

acid pathway through the catalysis of retinaldehyde to retinoic acid [10]. Isolated cancer cells with relatively high ALDH1 activity were shown to have *in vitro* features of CSCs, including capabilities of proliferation, self-renewal, and differentiation, and resistance to chemotherapy [7, 11, 12].

In this study, we aimed to determine the clinical and pathological value of immunohistochemical (IHC) staining of ALDH1 in tumor cells as well as peritumoral and intratumoral stromal cells in a series of invasive ductal carcinomas (IDCs).

Material and methods

This study was approved by the non-interventional clinical research ethical board (No: 2016/462).

Patients and clinical information

We retrospectively identified the patients diagnosed with IDC in the pathology laboratory between 2010 and 2016. We included all the patients who underwent mastectomy and with sufficient pathology material for histopathological examination. Clinical data were retrieved from the electronic medical records.

Review of histopathological and immunohistochemical findings

Two pathologists (YK and ÜT) reviewed all hematoxylin-eosin slides received from the pathology archive and determined the Nottingham histological grade of each tumor [13]. Patient demographics, tumor location, tumor diameter, the presence of lymphovascular and perineural invasion, surgical margin status, the presence of lymph node metastasis, and IHC staining results were obtained from patients' records and pathology reports. The status of estrogen receptor (ER), progesterone receptor (PR), and human epidermal growth factor receptor 2 (HER2) was determined according to the American Society of Clinical Oncology/College of American Pathologists guidelines [14, 15]. The Ki-67 proliferation index was regarded as high if there was more than 14% staining in tumor cells [16]. All cases with available IHC results were divided into molecular subtypes according to the International Breast Cancer Conference in St Gallen in 2013 [16]. Microscopic examination was performed using an Olympus brand MDOB3 model 8H16329 serial microscope.

Aldehyde dehydrogenase 1 staining and evaluation method

One representative block from each case was selected for staining with ALDH1 (polyclonal antibody, IgG isotype, dilution 1 : 150; GeneTex, Irvine,

CA, USA). Sections with a thickness of four microns were taken to positive-charged slides. The sections were left for 60 minutes at a temperature of 60°C. Then, the sections were kept at room temperature for 10 minutes and automatically stained with the XT DAB V3 protocol based on multimer technology in the Ventana BenchMark XT model. After the staining process, the sections were washed in soapy water for 5-10 minutes. After that, the slides were dried, placed in 96% alcohol and xylene, then they were closed in the Sakura Tissue Single Film model automatic film closure device.

We evaluated and scored ALDH1 immunostaining in the tumor cells as follows: score 0, no staining in the tumor cells; score 1, staining in less than 10% of the tumor cells; score 2, staining in more than 10% but less than 50% of the tumor cells; score 3, staining in more than 50% of the tumor cells. In the following analysis, we determined the tumor as ALDH1 positive if the tumor had a score of 2 or higher as previously described [17]. We also examined the stromal cell staining using a 10% cutoff value for positivity [18]. Adult liver tissue was used as a positive control.

Statistical analysis

Histopathological and clinical findings and IHC results were tabulated. All statistical analyses were carried out using the IBM SPSS Statistics 22.0 package program (IBM Corp., Armonk, New York, USA). The frequencies of clinical and histopathologic variables were presented by using cross-tabulations. A two-sided Fisher's χ^2 exact test for *rxr* tables was applied to compare the differences between groups for categorical variables. The normal distribution of variables was examined visually (histogram and probability plots) and with analytical methods (Shapiro-Wilk tests). A p value of less than 0.05 was considered significant.

Results

Patients and clinical information

There were a total of 105 patients including two males with a diagnosis of IDC. All cases had sufficient pathology material and clinicopathologic data.

The median age was 50 (range 24-85). Fifty-two (49.5%) of the tumors were located in the right breast, 48 (45.7) were in the left, and five (4.8%) involved both. The cases predominantly underwent modified radical mastectomy (n = 70, 66.7%, including two cases with bilateral involvement), 24 (22.9) cases had a partial mastectomy, and eight cases (7.6%) had a simple mastectomy. Three out of five cases with

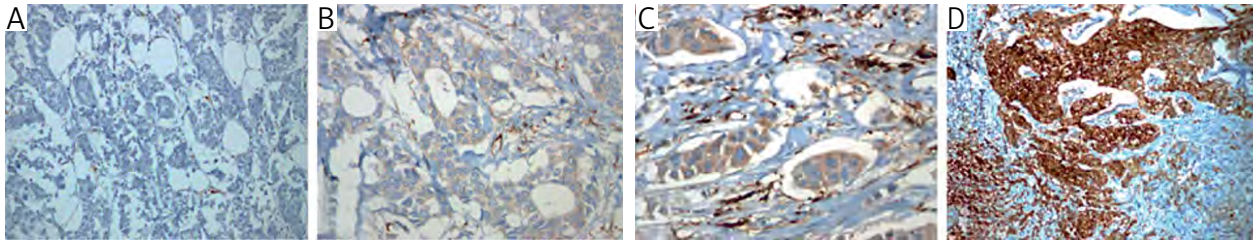


Fig. 1. ALDH1 staining in invasive ductal carcinomas. A) Score 0, negative for ALDH1. B) Score 1, negative for ALDH1. C) Score 2, positive for ALDH1. D) Score 3, positive for ALDH1

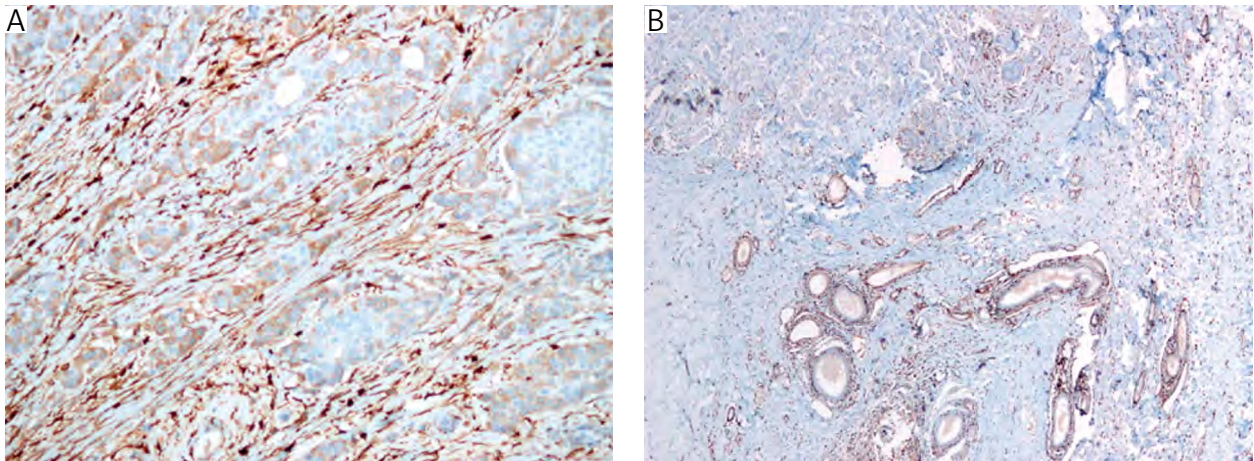


Fig. 2. ALDH1 staining in stromal cells in invasive ductal carcinomas. A) ALDH1 staining in intratumoral stromal cells. B) ALDH1 staining particularly in peritumoral and periductal stromal cells

bilateral breast carcinoma had simple mastectomy and modified radical mastectomy during the same operation.

Review of histopathological and immunohistochemical findings

The median diameter of the tumors was 25 mm (range 5-70 mm). Eighty-four tumors (80%) had a single focus, 16 (15.2%) were multifocal, and the remainder were bilateral. According to the histological grading system, 78 cases (74.3%) were grade 3, 26 cases (24.8%) were grade 2, and one case (1%) was grade 1. Lymphatic invasion was present in 66 cases (62.9%) and vascular invasion was seen in 25 cases (23.8%). Lymph node metastasis was detected in 70 cases (66.7%). Ninety cases (85.7%) were ER positive, 80 (76.2%) were PR positive, 28 out of 81 cases (34.6%) were HER2 positive, and Ki-67 was high in 73 (69.5%) cases. Classification of the tumors based on the IHC-based molecular subtypes (n = 100) revealed that 62 cases (62%) were in luminal B, 24 cases (24%) were in luminal A, 12 cases (12%) were in HER2, and 2 cases (2%) were in triple-negative breast carcinoma (TNBC) subtype.

Aldehyde dehydrogenase 1 staining in tumor and stromal cells

Aldehyde dehydrogenase 1 staining in IDCs is displayed in Fig. 1. Aldehyde dehydrogenase 1 was recorded as score 0 in 21 cases (20%), score 1 in 59 cases (56.2%), score 2 in 18 cases (17.1%), and score 3 in 7 cases (6.7%). The tumor cells in 25 cases (23.8%) were ALDH1 positive. All cases showed positivity in peritumoral stromal areas. All cases but one showed positivity in intratumoral stromal areas (Fig. 2). In addition, the concentration of ALDH1-positive stromal cells was more prominent in the peritumoral areas compared to the stromal cells surrounding benign ducts within tumor cells.

Correlation of aldehyde dehydrogenase 1 staining in tumor cells with clinical and histopathological features

The ALDH1 positive group compared to the negative group was found to be associated with ER negativity ($p = 0.044$). Aldehyde dehydrogenase 1 staining and IHC-based molecular subtypes were found to have a significant association ($p = 0.025$). A pairwise z-test post hoc analysis with Bonferroni correction revealed that only for TNBC was there a significant

Table I. Correlation of ALDH1 staining in the tumor cells with the clinicopathological parameters in invasive ductal carcinomas

CLINICAL AND PATHOLOGICAL PARAMETERS	ALDH1 IN TUMOR				P VALUE
	NEGATIVE		POSITIVE		
	#	%	#	%	
Age group (years)					
≤ 40	17	(77.3)	5	(22.7)	0.766
40-55	31	(79.5)	8	(20.5)	
≥ 55	32	(72.7)	12	(27.3)	
Diagnosis					
IDC	74	(75.5)	24	(24.5)	0.683
IDC with micropapillary component	6	(85.7)	1	(14.3)	
Laterality					
Right	40	(76.9)	12	(23.1)	1.000
Left	36	(75)	12	(25)	
Bilateral	4	(80)	1	(20)	
Operation					
PM	20	(83.3)	4	(16.7)	0.568
SM	6	(75)	2	(25)	
MRM	51	(72.9)	19	(27.1)	
SM + MRM	3	(100)	0	(0)	
Number of foci					
Single focus	67	(79.8)	17	(20.2)	0.113
Multifocal	9	(56.3)	7	(43.8)	
Bilateral	4	(80)	1	(20)	
Diameter					
≤ 2 cm	23	(85.2)	4	(14.8)	0.526
2-5 cm	53	(73.6)	19	(26.4)	
≥ 5 cm	4	(66.7)	2	(33.3)	
Histological grade					
Grade I-II	20	(74.1)	7	(25.9)	0.796
Grade III	60	(76.9)	18	(23.1)	
Lymph node metastasis					
Absent	26	(74.3)	9	(25.7)	0.810
Present	54	(77.1)	16	(22.9)	
Lymphatic invasion					
Absent	29	(74.4)	10	(25.6)	0.814
Present	51	(77.3)	15	(22.7)	
Vascular invasion					
Absent	63	(78.8)	17	(21.3)	0.290
Present	17	(68)	8	(32)	
ER					
Negative	8	(53.3)	7	(46.7)	0.044
Positive	72	(80)	18	(20)	

Table I. Cont.

CLINICAL AND PATHOLOGICAL PARAMETERS	ALDH1 IN TUMOR				P VALUE
	NEGATIVE		POSITIVE		
	#	%	#	%	
PR					
Negative	17	(68)	8	(32)	0.290
Positive	63	(78.8)	17	(21.3)	
HER2					
Negative	40	(75.5)	13	(24.5)	0.963
Positive	21	(75)	7	(25)	
Ki-67					
Low (≤ 14)	26	(81.3)	6	(18.8)	0.467
High (> 14)	54	(74)	19	(26)	
Molecular subtype					
Luminal A	20	(83.3)	4	(16.7)	0.025
Luminal B	49	(79)	13	(21)	
HER2	7	(58.3)	5	(41.7)	
TNBC	0	(0)	2	(100)	

ER – estrogen receptor; PR – progesterone receptor; HER2 – human epidermal growth factor receptor 2; IDC – invasive ductal carcinoma; PM – partial mastectomy; SM – simple mastectomy; MRM – modified radical mastectomy; TNBC – triple-negative breast cancer; # – number of cases; % – percentage of cases in a row

difference between the ALDH1 positive and negative cases ($p < 0.05$). There was no significant relationship between ALDH1 positivity and the other clinicopathologic parameters (Table I).

Discussion

Aldehyde dehydrogenase 1 was identified as a reliable stem cell marker of the normal human breast and breast carcinomas [7]. In this study, our purpose was to appraise the clinical and pathological value of ALDH1 staining in patients with a diagnosis of IDC, no special type. Our results showed that ALDH1-positive IDCs are associated with ER negativity. Hormone receptor negativity in invasive breast carcinomas is a well-known factor associated with treatment resistance and poor prognosis; hence, our results suggested that ALDH1-positive IDCs may represent a biologically aggressive phenotype [4, 19].

In breast carcinomas, ALDH1 positivity has ranged from 18% to 56% in different studies [7, 20, 21, 22, 23]. Likewise, 23.8% of IDCs in our series were positive for ALDH1. Various studies have aimed to determine the clinical and pathological differences between ALDH1-positive and negative breast carcinomas. In accordance with our results, some of these studies have shown that ALDH1 positivity is associated with ER negativity [7, 17, 18, 24, 25]. Some studies have found that ALDH1 positive breast carcinomas are also more likely to be PR negative and/or

HER2 positive, and they are associated with a high Ki67 proliferative index; but some others including our study have found no such correlation [7, 17, 18, 24, 25, 26, 27]. Several studies have demonstrated that ALDH1-positive invasive breast carcinomas are associated with TNBC and/or HER2(+) subtype [17, 18, 26, 27]. In our series, ALDH1 positivity was observed more frequently in TNBCs as well; however, the number of TNBC patients was too small to determine an exact association. There are discrepancies in studies correlating ALDH1 positivity and histological grade, tumor size, and patient outcome [6, 7, 17, 18, 24, 25, 26, 27, 28, 29]. Most studies have reported no value of finding of ALDH1-positive tumor cells in predicting lymph node metastasis [7, 17, 18, 24, 26, 27]. In our study, we did not find an association with ALDH1 positivity and several significant prognostic factors, such as tumor diameter, histological grade, lymph node metastasis, lymphatic or vascular invasion.

Aldehyde dehydrogenase 1 staining in intratumoral stromal and peritumoral stromal cells in breast cancers has received special attention. One study reported high levels of ALDH1 staining in stromal cells in breast cancers that develop sporadically or in patients with BRCA1 mutations. Peritumoral stromal staining in the BRCA1-mutated group was significantly higher than the non-BRCA1-mutated group. According to this study, peritumoral stromal ALDH1 staining was associated with ER and PR negativity, basal-like phenotype, and high mitotic activity [30].

In our study, ALDH1 staining in the peritumoral stromal cells was observed in all but one case. Our findings are incompatible with the above study. Another observation of ours was that ALDH1-positive stromal cells were more concentrated in the peritumoral areas compared to the stromal cells surrounding benign ducts within tumor cells. In one study, ALDH1, which takes part in the retinoic acid synthesis pathway, was shown to have a role in normal epithelial cell proliferation and their ability to acquire progenitor/stem cell differentiation properties [31]. In another study, retinoic acid-producing ALDH1-positive dendritic cells in the intestines were shown to activate immune system cells. In addition, it has been found that the presence of ALDH1-positive stromal cells in tumors increases retinoic acid synthesis and secretion, thus increasing tumor cell differentiation and reducing the aggressiveness of the tumor [18]. These findings have suggested that activated immune system cells may play a role in preventing the development of malignancy in the areas where ALDH1-positive stromal cell density is high around the tumor, as seen in our cases.

There were a few limitations of our study. The number of patients included in this study was relatively small. This was particularly a drawback in the correlation analysis between ALDH1 staining and molecular subtypes. Survival analyses were not carried out in this study; hence we have limited results regarding the prognostic value of ALDH1.

In conclusion, our findings suggest that stem cell-like features are more prominent in IDCs with ER negativity. Hence, ALDH1-positive IDCs may be more aggressive and less sensitive to hormonal therapy. However, further studies would be needed to reveal whether there is any prognostic significance of ALDH1. It is plausible that the peritumoral concentration of ALDH1-positive stromal cells may generate a reactive stromal response against the development of malignancy or may be protective.

The authors declare no conflict of interest.

References

1. Meacham CE, Morrison SJ. Tumour heterogeneity and cancer cell plasticity. *Nature* 2013; 501: 328-337.
2. Singh SK, Clarke ID, Terasaki M, et al. Identification of a cancer stem cell in human brain tumors. *Cancer Res* 2003; 63: 5821-5828.
3. Diehn M, Cho RW, Lobo NA, et al. Association of reactive oxygen species levels and radioresistance in cancer stem cells. *Nature* 2009; 458: 780-783.
4. Osborne CK, Yochmowitz MG, Knight WA, McGuire WL. The value of estrogen and progesterone receptors in the treatment of breast cancer. *Cancer* 1980; 46: 2884-2888.
5. Lapidot T, Sirard C, Vormoor J, et al. A cell initiating human acute myeloid leukaemia after transplantation into SCID mice. *Nature* 1994; 367: 645-648.
6. Al-Hajj M, Wicha MS, Benito-Hernandez A, et al. Prospective identification of tumorigenic breast cancer cells. *Proc Natl Acad Sci* 2003; 100: 3983-3988.
7. Ginestier C, Hur MH, Charafe-Jauffret E, et al. ALDH1 is a marker of normal and malignant human mammary stem cells and a predictor of poor clinical outcome. *Cell Stem Cell* 2007; 1: 555-567.
8. Rodriguez-Torres M, Allan AL. Aldehyde dehydrogenase as a marker and functional mediator of metastasis in solid tumors. *Clin Exp Metastasis* 2016; 33: 97-113.
9. Vasilou V, Nebert DW. Analysis and update of the human aldehyde dehydrogenase (ALDH) gene family. *Hum Genomics* 2005; 2: 138-143.
10. Chute JP, Muramoto GG, Whitesides J, et al. Inhibition of aldehyde dehydrogenase and retinoid signaling induces the expansion of human hematopoietic stem cells. *Proc Natl Acad Sci USA* 2006; 103: 11707-11712.
11. Jiang F, Qiu Q, Khanna A, et al. Aldehyde dehydrogenase 1 is a tumor stem cell-associated marker in lung cancer. *Mol Cancer Res* 2009; 7: 330-338.
12. Croker AK, Allan AL. Inhibition of aldehyde dehydrogenase (ALDH) activity reduces chemotherapy and radiation resistance of stem-like ALDH hiCD44 + human breast cancer cells. *Breast Cancer Res Treat* 2012; 133: 75-87.
13. Sugawara E, Nikaido H. Properties of AdeABC and AdeIJK efflux systems of *Acinetobacter baumannii* compared with those of the AcrAB-TolC system of *Escherichia coli*. *Antimicrob Agents Chemother* 2014; 58: 7250-7257.
14. Hammond MEH, Hayes DF, Dowsett M, et al. American Society of Clinical Oncology/College of American Pathologists guideline recommendations for immunohistochemical testing of estrogen and progesterone receptors in Breast Cancer. *J Clin Oncol* 2010; 28: 2784-2795.
15. Wolff AC, Hammond MEH, Hicks DG, et al. Recommendations for human epidermal growth factor receptor 2 testing in breast cancer: American Society of Clinical Oncology/College of American Pathologists clinical practice guideline update. *J Clin Oncol* 2013; 31: 3997-4013.
16. Goldhirsch A, Winer EP, Coates AS, et al. Personalizing the treatment of women with early breast cancer: highlights of the St Gallen International Expert Consensus on the Primary Therapy of Early Breast Cancer 2013. *Ann Oncol* 2013; 24: 2206-2223.
17. Kim SJ, Kim YS, Jang ED, et al. Prognostic Impact and Clinicopathological Correlation of CD133 and ALDH1 Expression in Invasive Breast Cancer. *J Breast Cancer* 2015; 18: 347.
18. Bednarz-Knoll N, Nastaly P, Żaczek A, et al. Stromal expression of ALDH1 in human breast carcinomas indicates reduced tumor progression. *Oncotarget* 2015; 6: 26789-26803.
19. Badowska-Kozakiewicz AM, Patera J, Sobol M, Przybylski J. The role of oestrogen and progesterone receptors in breast cancer – immunohistochemical evaluation of oestrogen and progesterone receptor expression in invasive breast cancer in women. *Contemp Oncol (Poznan)* 2015; 19: 220-225.
20. Yoshioka T, Umekita Y, Ohi Y, et al. Aldehyde dehydrogenase 1 expression is a predictor of poor prognosis in node-positive breast cancers: a long-term follow-up study. *Histopathology* 2011; 58: 608-616.
21. Resetskova E, Reis-Filho JS, Jain RK, et al. Prognostic impact of ALDH1 in breast cancer: a story of stem cells and tumor microenvironment. *Breast Cancer Res Treat* 2010; 123: 97-108.
22. Deng S, Yang X, Lassus H, et al. Distinct expression levels and patterns of stem cell marker, aldehyde dehydrogenase isoform 1 (ALDH1), in human epithelial cancers. *PLoS One* 2010; 5: e10277.
23. Charafe-Jauffret E, Ginestier C, Iovino F, et al. aldehyde dehydrogenase 1-positive cancer stem cells mediate metastasis

- and poor clinical outcome in inflammatory breast cancer. *Clin Cancer Res* 2010; 16: 45-55.
24. Lv X, Wang Y, Song Y, et al. Association between ALDH1+/CD133+stem-like cells and tumor angiogenesis in invasive ductal breast carcinoma. *Oncol Lett* 2016; 11: 1750-1756.
 25. Park SY, Lee HE, Li H, et al. Heterogeneity for stem cell-related markers according to tumor subtype and histologic stage in breast cancer. *Clin Cancer Res* 2010; 16: 876-887.
 26. Pan H, Wu N, Huang Y, et al. Aldehyde dehydrogenase 1 expression correlates with the invasion of breast cancer. *Diagn Pathol* 2015; 10: 66.
 27. Ricardo S, Vieira AF, Gerhard R, et al. Breast cancer stem cell markers CD44, CD24 and ALDH1: Expression distribution within intrinsic molecular subtype. *J Clin Pathol* 2011; 64: 937-944.
 28. Neumeister V, Agarwal S, Bordeaux J, et al. In situ identification of putative cancer stem cells by multiplexing ALDH1, CD44, and cytokeratin identifies breast cancer patients with poor prognosis. *Am J Pathol* 2010; 176: 2131-2138.
 29. Mansour SF, Atwa MM. Clinicopathological significance of CD133 and ALDH1 cancer stem cell marker expression in invasive ductal breast carcinoma. *Asian Pacific J Cancer Prev* 2015; 16: 7491-7496.
 30. Heerma van Voss MR, van der Groep P, Bart J, et al. Expression of the stem cell marker ALDH1 in BRCA1 related breast cancer. *Cell Oncol (Dordr)* 2011; 34: 3-10.
 31. Honeth G, Lombardi S, Ginestier C, et al. Aldehyde dehydrogenase and estrogen receptor define a hierarchy of cellular differentiation in the normal human mammary epithelium. *Breast Cancer Res* 2014; 16: R52.

Address for correspondence

Yazgı Köy

Department of Pathology

Batman State Hospital

Batman, Turkey

e-mail: dr.yazgikoy@gmail.com