

CASE STUDY

STUDIUM PRZYPADKU

PENTALOGY OF CANTRELL – CASE REPORT

PENTALOGIA CANTRELLA – OPIS PRZYPADKU

Justyna Plusajska^{1,2(A,B,C,D,E,F,G)}, **Grzegorz Świercz**^{1,2(A,B,E)}, **Jakub Młodawski**^{1,2(A,B,E)},

Mariusz Malmur^{2(B,D,E)}, **Magdalena Zalega**^{2(B,D,E)}

¹Department of Gynecology and Obstetrics, Collegium Medicum, Jan Kochanowski University in Kielce,

Poland

²Department of Obstetrics and Gynecology Regional Hospital in Kielce, Poland

Plusajska J, Świercz G, Młodawski J, Malmur M, Zalega M. Pentalogy of Cantrell – case report. Health Prob Civil. <https://doi.org/10.5114/hpc.2024.138897>

Tables: 0

Figures: 7

References: 21

Submitted: 2024 Jan 30

Accepted: 2024 Apr 15

Address for correspondence / Adres korespondencyjny: Justyna Plusajska, Department of Gynecology and Obstetrics, Collegium Medicum, Jan Kochanowski University in Kielce, al. IX Wieków Kielc 19A, 25-516 Kielce, Poland, e-mail: justyna.plusajska@gmail.com, phone: +48 41 349 69 11.

ORCID: Justyna Plusajska <https://orcid.org/0000-0003-0011-0587>, Grzegorz Świercz <https://orcid.org/0000-0002-4175-0209>, Jakub Młodawski <https://orcid.org/0000-0002-5740-9822>

Copyright: © John Paul II University in Białą Podlaska, Justyna Płusajska, Grzegorz Świercz, Jakub Młodawski, Mariusz Malmur, Magdalena Zalega. This is an Open Access journal, all articles are distributed under the terms of the Creative Commons Attribution-NonCommercial-ShareAlike 4.0 International (CC BY-NC-SA 4.0) License (<http://creativecommons.org/licenses/by-ncsa/4.0/>), allowing third parties to copy and redistribute the material in any medium or format and to remix, transform, and build upon the material, provided the original work is properly cited and states its license.

Summary

Cantrell's Pentalogy is a rare developmental disorder occurring between the 14th and 18th day of embryonic life. Diagnosis is possible in the first trimester, when the rupturing of the continuity of the anterior chest cavity and abdominal walls is usually found. Ectopic heart and umbilical hernia is also characteristic. In this article, a case of a thirty-three-year-old patient in second pregnancy was described, who was diagnosed with developmental disorders during a routine visit to a gynecologist. Woman was referred to the Laboratory of Prenatal Research, where the fetus was diagnosed with: umbilical cord hernia, diaphragmatic hernia with diaphragmatic defect, sternal defect, ectopic heart and pericardial defect, the swelling of the entire fetus – NT 5 mm – and the reverse flow in the DV were visualized. The woman and the child's father, after having been presented with the prognosis, decided to terminate the pregnancy. Due to the heterogeneous picture of disorders occurring in pentalogy of Cantrell and the small number of cases described in the literature, each case should be approached with caution and in an individual manner. Abnormalities in the structure of the heart additionally compounded by coexisting disorders are crucial for the prognosis and they determine the method and order of treatment.

Keywords: Pentalogy of Cantrell, prenatal diagnosis, congenital defects syndrome, heart defect

Streszczenie

Pentalogia Cantrella jest rzadkim zaburzeniem rozwojowym, powstającym między 14, a 18 dniem życia zarodkowego. Rozpoznanie jest możliwe do postawienia już w pierwszym trymestrze ciąży, gdzie zazwyczaj stwierdza się przerwanie ciągłości przedniej ściany klatki piersiowej i powłok jamy brzusznej. Charakterystyczne jest również występowanie ektopii serca i przepukliny pępowinowej. W niniejszej pracy opisano przypadek trzydziestotrzyletniej pacjentki będącej w drugiej ciąży, u której podczas rutynowej wizyty u ginekologa stwierdzono zaburzenia rozwojowe. Ciężarną skierowano do Pracowni Badań Prenatalnych, gdzie u płodu zdiagnozowano: przepuklinę sznura pępowinowego, przepuklinę przeponową z ubytkiem przepony, ubytek mostka, ektopię serca i ubytek osierdzia. Ponadto uwidoczniło obrzęk całego płodu – NT 5 mm oraz wsteczny przepływ w przewodzie żylnym. Kobieta wraz z ojcem dziecka, po przedstawieniu im rokowania, podjęła decyzję o przerwaniu ciąży. Ze względu na niejednorodny obraz zaburzeń występujących w zespole Cantrella oraz niewielką liczbę przypadków opisanych w literaturze, do każdego przypadku należy podchodzić bardzo ostrożnie i indywidualnie. Zasadnicze znaczenie dla rokowania mają nieprawidłowości w obrębie budowy serca, a dodatkowo współwystępujące zaburzenia je pogarszają i warunkują sposób i kolejność leczenia.

Słowa kluczowe: pentalogia Cantrella, diagnostyka prenatalna, zespół wad wrodzonych, wada serca

Introduction

Pentalogy of Cantrell or Cantrell Syndrome is a rare developmental disorder in the course of which some characteristic birth defects are observed: loss of the anterior abdominal cavity above the level of the navel, developmental disorders of the lower part of the sternum, loss of the diaphragmatic part of the pericardium and congenital defects of the heart or large

vessels [1,2]. This defect usually arises between the 14th and 18th day of embryonic life, and the conditions underlying its emergence are disorders of mesoderm migration [3,4]. This syndrome was first described in 1958 by Cantrell, Mark and Ravitch [1]. The incidence of pentalogy of Cantrell is quite difficult to estimate, but according to researchers it is about 5.5:1 million births and generally affects boys [4,5]. Although in most cases this disorder occurs sporadically, inheritance may be presumably related to the X chromosome.

There are many variants of this disorder, where a different constellation of coexisting defects is observed in both prenatal and postnatal ultrasound studies [6]. Based on 60 cases described in the literature, in 1972 Toyama proposed the pentalogy of Cantrell classification, which allows for better planning of diagnosis and treatment, as well as curability prognosis. This division includes three groups, the first group being patients with a full range of symptoms – five different developmental disorders, and the diagnosis is certain. The second group includes patients with a syndrome suspicion. Four symptoms are present, but a heart defect and developmental disorder of the anterior abdominal cavity need to coexist. In the third group of cases, where the diagnosis is incomplete, only some symptoms of the syndrome are observed, such as a defect in the sternum [7,8]. Pentalogy of Cantrell is already diagnosable in the first trimester of pregnancy. Usually, the rupturing of the continuity of the anterior chest cavity and abdominal walls is established. The presence of an ectopic heart and omphalocele is also characteristic and attention should be paid to the physiological omphalocele, which occurs before the 12th week of pregnancy, when only intestinal loops are outpouched into the umbilical cord.

The type of coexisting heart defect is crucial for the prognosis. In the case of pentalogy of Cantrell, the most commonly observed defect is the interventricular septum defect, and in half of the cases also the interatrial septum defect. Other less frequently diagnosed abnormalities are Fallot's tetralogy, pulmonary valve stenosis or double outlet right ventricle

(DORV) [9]. The coexistence of Cantrell Syndrome with extended nuchal translucency has also been described [10].

Case description

A thirty-three-year-old pregnant woman in her second pregnancy (the first pregnancy was unsuccessful – miscarriage at week 8 of pregnancy), visited a gynecologist for a routine check-up at week 12 of pregnancy, during which developmental disorders were found in the anterior chest cavity and abdominal walls. The woman was healthy, denied having chronic diseases, and was taking folic acid and vitamin preparations for pregnant women. The patient also denied the existence of any infections at an early stage of pregnancy. The woman was referred to the Laboratory of Prenatal Research, where, during prenatal ultrasound examination, the fetus was diagnosed with a complex defect of the skin and division of the body's cavities in the form of pentalogy of Cantrell. The fetus was diagnosed with umbilical cord omphalocele (Figure 1), diaphragmatic hernia with diaphragmatic defect, sternal defect, ectopic heart and pericardial defect (Figures 2-3).



Figure 1. Fetus at week 12 of pregnancy with visible umbilical cord omphalocele

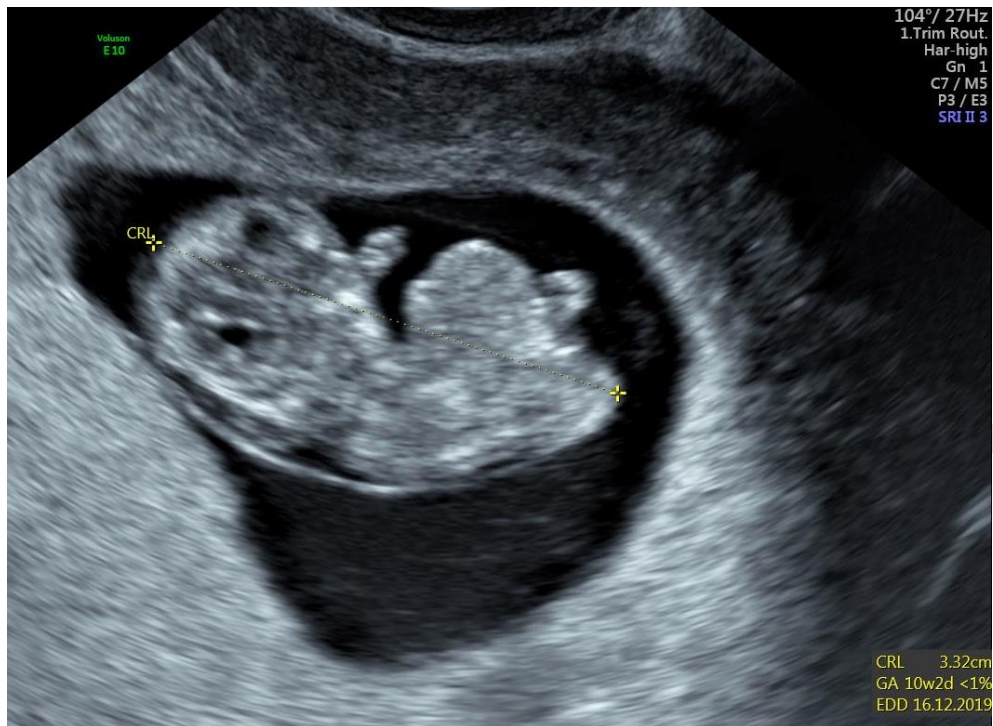


Figure 2. Fetal ectopic heart at week 12 of pregnancy based on the date of the last menstrual period



Figure 3. Ectopic heart in 3D ultrasound – week 12 of pregnancy

Moreover, the fetal heart seemed to possess four cavities, two slightly asymmetrical inflows of the ventricles and the origins of two vessels in abnormal relationships were visualized (Figures 4-5).

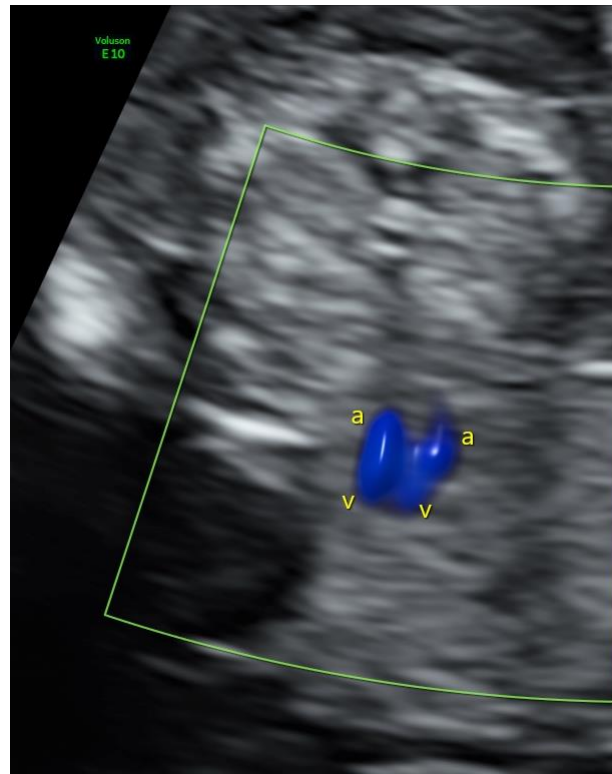


Figure 4. Fetal heart image at week 12 of pregnancy

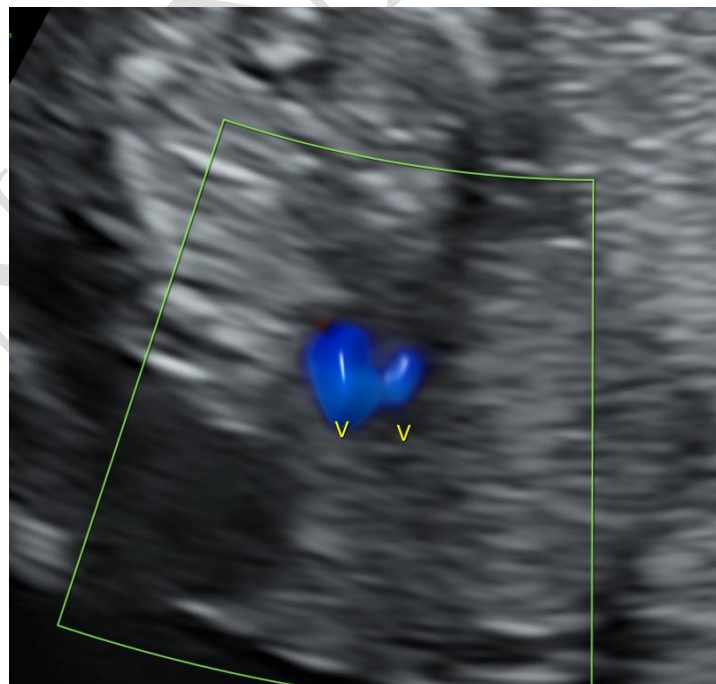


Figure 5. Fetal heart image at week 12 of pregnancy

The swelling of the entire fetus was visualized – NT 5 mm (Figure 6) and reverse flow in the ductus venosus (Figure 7).



Figure 6. Extended nuchal translucency NT 5 mm

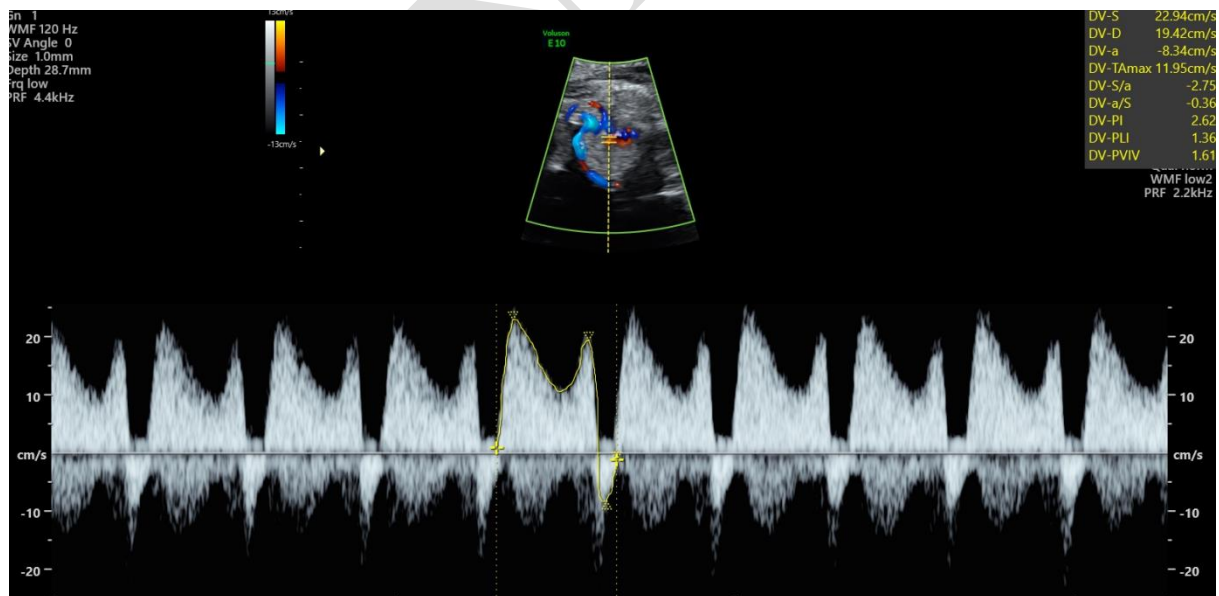


Figure 7. Reverse flow in the ductus venosus

The patient was presented with possible options for managing the condition: continuing the pregnancy with a poor prognosis of survival, high risk of intrauterine death or death of the new-born after childbirth, as well as the admissibility of terminating the pregnancy at the current stage, in accordance with the Polish legislation due to serious and irreversible defects in the fetus. Throughout the hospitalization period, the patient also had unlimited access to psychological support. In the presence of the medical council, the woman decided to terminate the pregnancy.

Case analysis

Due to the heterogeneous picture of disorders occurring in Cantrell Syndrome and the small number of cases described in the literature, each case should be approached with caution and in an individual manner. Limited data on this disease may result from the high mortality observed in this condition, resulting from the coexisting severe heart defect, as well as from the decision of patients to terminate pregnancy in most cases.

The early diagnosis and determination of the heart defect – already possible in the first trimester of pregnancy – is particularly important, determining the method and order of treatment [6,10-13]. The relatively rare ectopic heart, where the heart muscle located outside the chest may be covered with nothing but the serous membrane or skin, is associated with a mortality rate of up to 95%. Figueroa et al. [14], among the 21 cases of pentalogy of Cantrell described by them, found ectopia and heart defects in 6 new-borns. Unfortunately, treatment attempts were unsuccessful [14]. Similar results were obtained in a study conducted by Malula et al., [15] where 4 out of 5 new-borns died with a diagnosis of ectopic heart. Zidere et al. [16] present more optimistic results in a study from 2008, where in three cases in which Cantrell Syndrome with fetal ectopic heart had been diagnosed, cardiac retraction into the chest was

observed in subsequent ultrasound studies. After birth, the newborns underwent multi-stage surgery and survived [16]. Respondek-Liberska et al. [17] from the ICZMP Clinic of Prenatal Cardiology in Łódź in 2000 published a study describing 7 cases of patients in whom fetuses were suspected of Cantrell Syndrome and who decided to continue their pregnancy. Five fetuses had heart defects in the form of ventricular septal defect (VSD), VSD with relocation of large vessels, left heart hypoplasia syndrome with relocation of large arterial trunks (HLHS with TGA) and a common atrioventricular canal with patent ductus arteriosus. In addition, one of the following defects was found in each fetus: eventration (7), skeletal defects (5), pleural effusion (3), diaphragmatic hernia (2) and kidney defects (1). Three newborns died after birth, and the other four died in utero.

Conclusions

Pentalogy of Cantrell is an extremely complex defect, where abnormalities in the structure of the heart are crucial for the prognosis, and they are additionally compounded by coexisting disorders. Until the 1990s, the survival rate of patients with Cantrell Syndrome oscillated around 37%, and in the last two decades it increased to about 60% [18,19]. This is undoubtedly related to early diagnosis, detecting specific disorders – especially a severe heart defect, which in turn determines further management and treatment. Huge progress in neonatal and anesthetic care is also important here [20,21].

Disclosures and acknowledgements

The authors declare no conflicts of interest with respect to the research, authorship, and/or publication of this article. This research received no specific grant from any funding

agency in the public, commercial, or not-for-profit sectors. Artificial intelligence (AI) was not used in the creation of the manuscript.

References:

1. Cantrell RJ, Haller A, Mark M. A syndrome of congenital defects involving the abdominal wall, sternum, diaphragm, pericardium, and heart. *Surg. Gynecol. Obstet.* 1958; 107: 602-614.
2. Grigore M, Micu R, Matasariu R, Duma O, Chicea AL, Chicea R. Cantrell syndrome in the first trimester of pregnancy: imagistic findings and literature review. *Med Ultrason.* 2020; 22(2): 189-196. <https://doi.org/10.11152/mu-2316>
3. Meyer WJ, Gauthier DW, Torres W, Donald W, Warsof S. Ectopia cordis case report [Internet]. St. Louis, MO: Institute for Advanced Medical Education [access 2024 March 11]. Available from: <http://www.sonoworld.com/Client/TheFetus/page.aspx?id=45>
4. Thamboo TP, Chan NH. Pentalogy of Cantrell with a double-outlet left ventricle. *Pathology.* 2005; 37: 87-89. <https://doi.org/10.1080/00313020400024840>
5. Van Hoorn J, Moonen R, Huysentruyt C, Van Heurn E, Offermans J, Mulder A. Pentalogy of Cantrell: two patients and a review to determine prognostic factors for optimal approach. *Eur J Pediatr.* 2008; 167: 29-35. <https://doi.org/10.1007/s00431-007-0578-9>
6. Siles C, Boyd P, Manning N, Tsang T, Chamberlain P. Omphalocele and pericardial effusion: possible markers for the pentalogy of Cantrell or its variants. *Obstet Gynecol.* 1996; 87: 840-842.

7. Toyama W. Combined congenital defects of the anterior abdominal wall, sternum, diaphragm, pericardium and heart: a case report and review of the syndrome. *Pediatrics*. 1972; 50: 778-792.
8. Dębska M. [Pentalogy of Cantrell – always poor diagnosis?]. *Analiza przypadków w Ginekologii i Położnictwie*. 2017; 4 (in Polish).
9. Chandran S, Ari D. Pentalogy of Cantrell: an extremely rare congenital anomaly. *J Clin Neonatol*. 2013; 2(2): 95-97. <https://doi.org/10.4103/2249-4847.116410>
10. Keppler-Noreuil K, Gorton S, Foo F, Yankowitz J, Keegan C. Prenatal ascertainment of OEIS complex/cloacal exstrophy – 15 new cases and literature review. *Am J Med Genet Part A*. 2007; 143A: 2122-2128. <https://doi.org/10.1002/ajmg.a.31897>
11. Agrawal N, Sehgal R, Kumar R, Bhadoria P. Cantrell's Pentalogy. *Anaesth Intensive Care*. 2003; 31: 120-123. <https://doi.org/10.1177/0310057X0303100122>
12. Song A, McLeary M. MR imaging of pentalogy of Cantrell variant with an intact diaphragm and pericardium. *Pediatr Radiol*. 2000; 30: 638-639. <https://doi.org/10.1007/s002470000288>
13. Vanamo K, Sairanen H, Louhimo I. The spectrum of Cantrell's syndrome. *Pediatr Surg Int*. 1991; 6: 429-433. <https://doi.org/10.1007/BF00185335>
14. de Rubens Figueroa J, Sosa Cruz EF, Díaz García L, Carrasco Daza D. Cardiac malformations in patients with pentalogy of Cantrell and ectopia cordis. *Rev. Esp. Cardiol*. 2011; 64(7): 615-618. <https://doi.org/10.1016/j.rec.2010.07.003>
15. Mallula KK, Sosnowski C, Awad S. Spectrum of Cantrell's pentalogy: case series from a single tertiary care center and review of the literature. *Pediatr Cardiol*. 2013; 34(7): 1703-1710. <https://doi.org/10.1007/s00246-013-0706-4>.
16. Zidere V, Allan LD. Changing findings in pentalogy of Cantrell in fetal life. *Ultrasound Obstet. Gynecol*. 2008; 32: 835-837. <https://doi.org/10.1002/uog.6223>

17. Respondek-Liberska M, Janiak K, Wloch A. Fetal echocardiography in ectopia cordis. *Pediatr. Cardiol.* 2000; 21(3): 249-252. <https://doi.org/10.1007/s002460010051>
18. Martin R, Cunniff C, Erickson I. Pentalogy of Cantrell and ectopia cordis, a familial developmental field complex. *Am J Med Gen.* 1992; 42: 839-841. <https://doi.org/10.1002/ajmg.1320420619>
19. Singh N, Bera ML, Sachdev MS, Aggarwal N, Joshi R, Kohli V. Pentalogy of Cantrell with left ventricular diverticulum: a case report and review of literature. *Congenit Heart Dis.* 2010; 5(5): 454-457. <https://doi.org/10.1111/j.1747-0803.2009.00375.x>
20. Martin R, Cunniff C, Erickson I. Pentalogy of Cantrell and ectopia cordis, a familial developmental field complex. *Am J Med Gen.* 1992; 42: 839-841. <https://doi.org/10.1002/ajmg.1320420619>
21. Williams AP, Marayati R, Beierle EA. Pentalogy of Cantrell. *Semin Pediatr Surg.* 2019; 28(2): 106-110. <https://doi.org/10.1053/j.sempedsurg.2019.04.006>